



## Planning and Transportation Committee

**Date:** TUESDAY, 12 MAY 2015  
**Time:** 10.30 am  
**Venue:** LIVERY HALL - GUILDHALL

# Committee Presentation

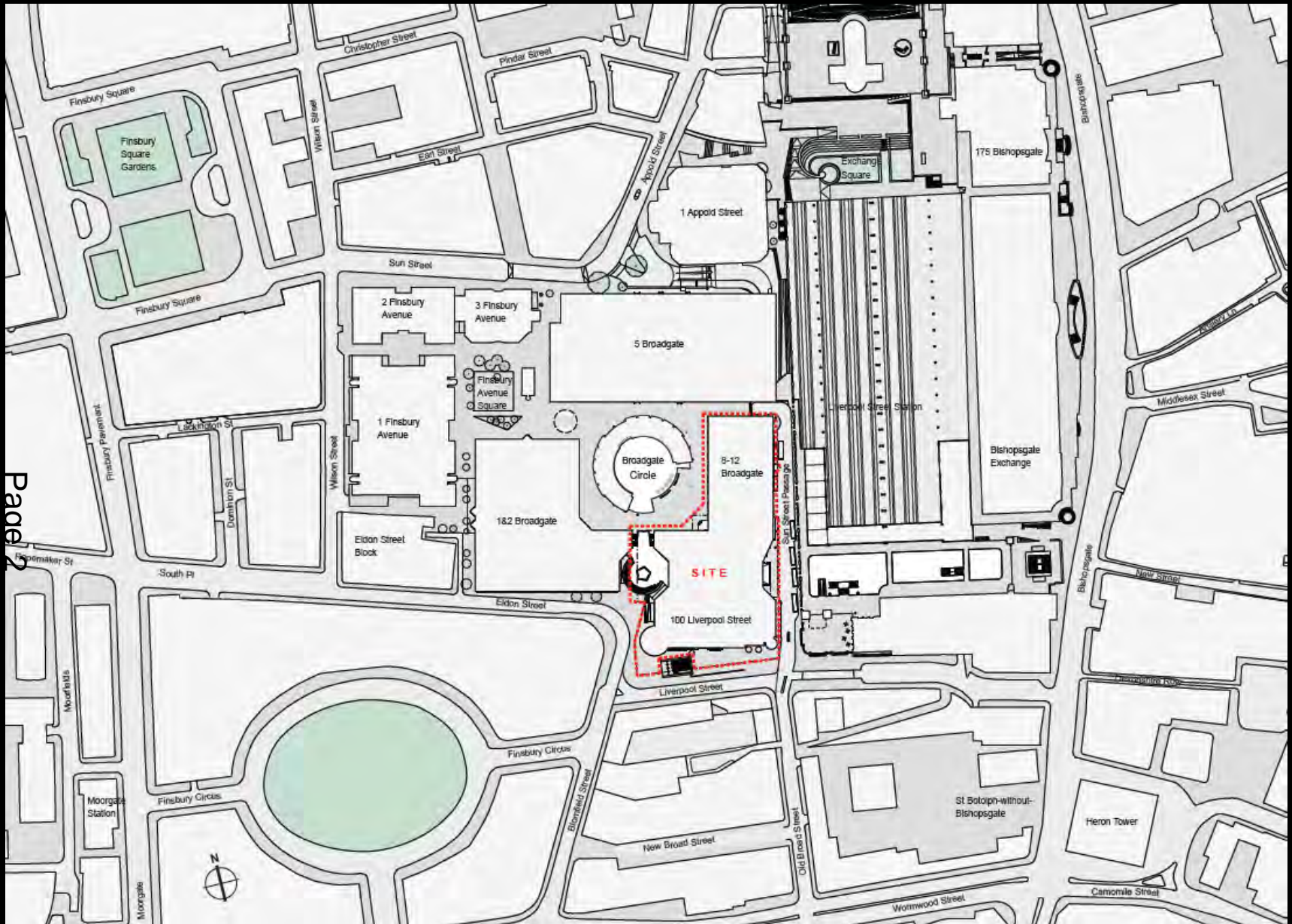
**John Barradell**  
Town Clerk and Chief Executive

This page is intentionally left blank

# Planning & Transportation Committee

12<sup>th</sup> May 2015

# 100 Liverpool Street and 8-12 Broadgate



Page 2

Site location plan

100 Liverpool Street and 8-12 Broadgate



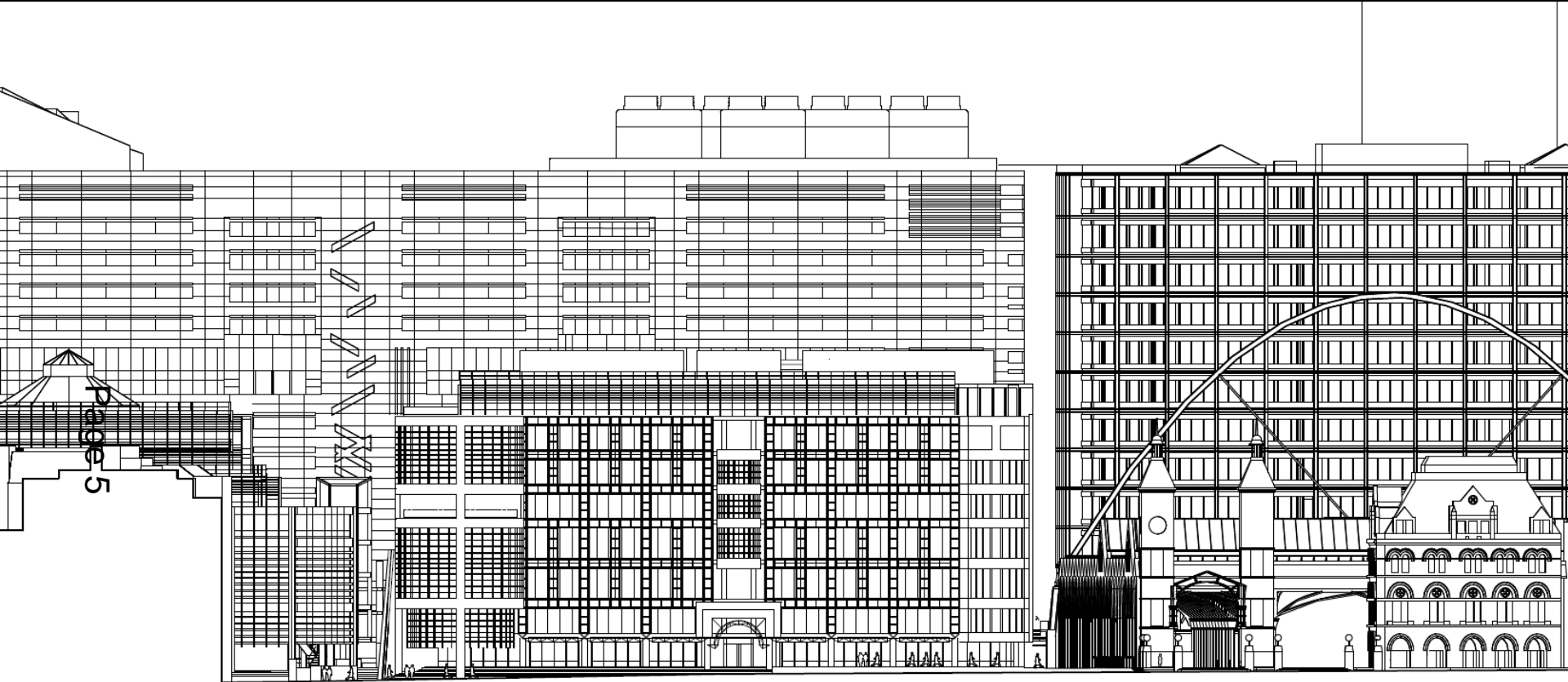
View west along Liverpool Street

# 100 Liverpool Street and 8-12 Broadgate



View south-east from Broadgate Circle

# 100 Liverpool Street and 8-12 Broadgate

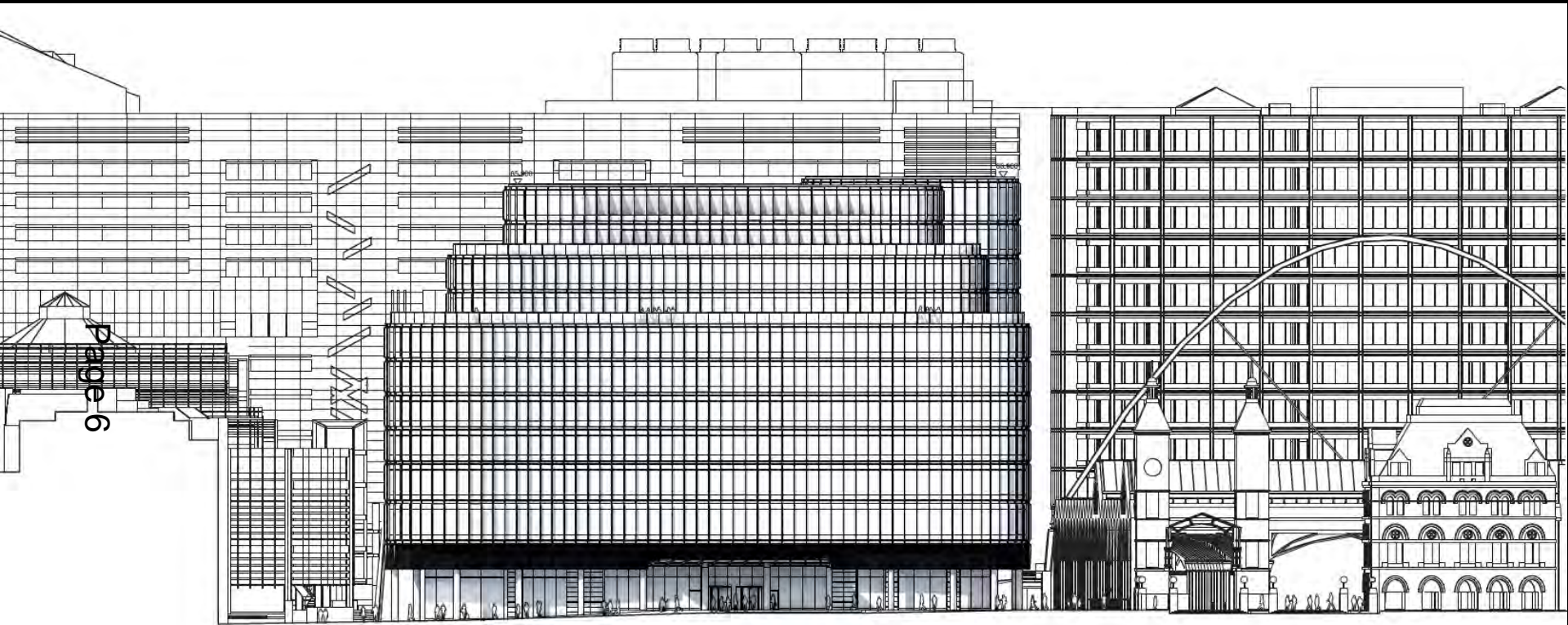


BLOMFIELD STREET

LIVERPOOL STREET STATION

Existing south elevation

# 100 Liverpool Street and 8-12 Broadgate



Page 6

BLOMFELD STREET

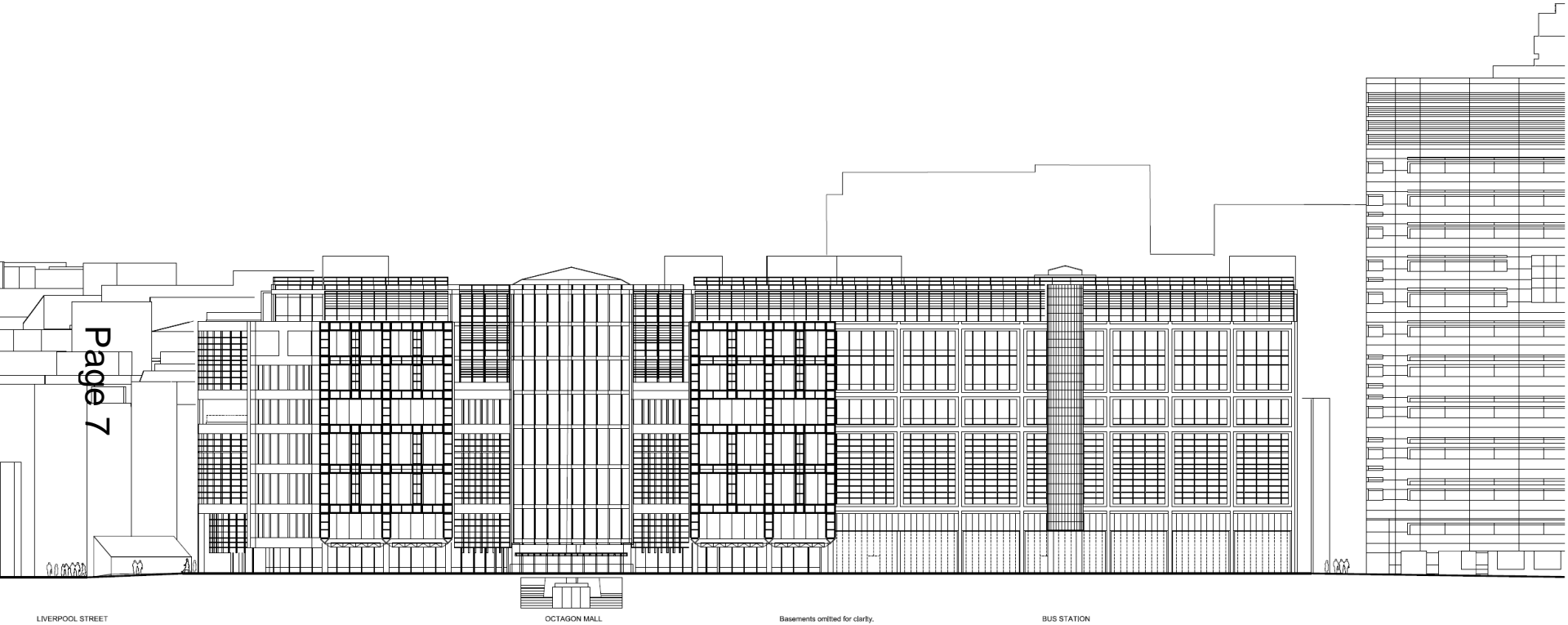
LIVERPOOL STREET STATION

Proposed south elevation



# 100 Liverpool Street and 8-12 Broadgate

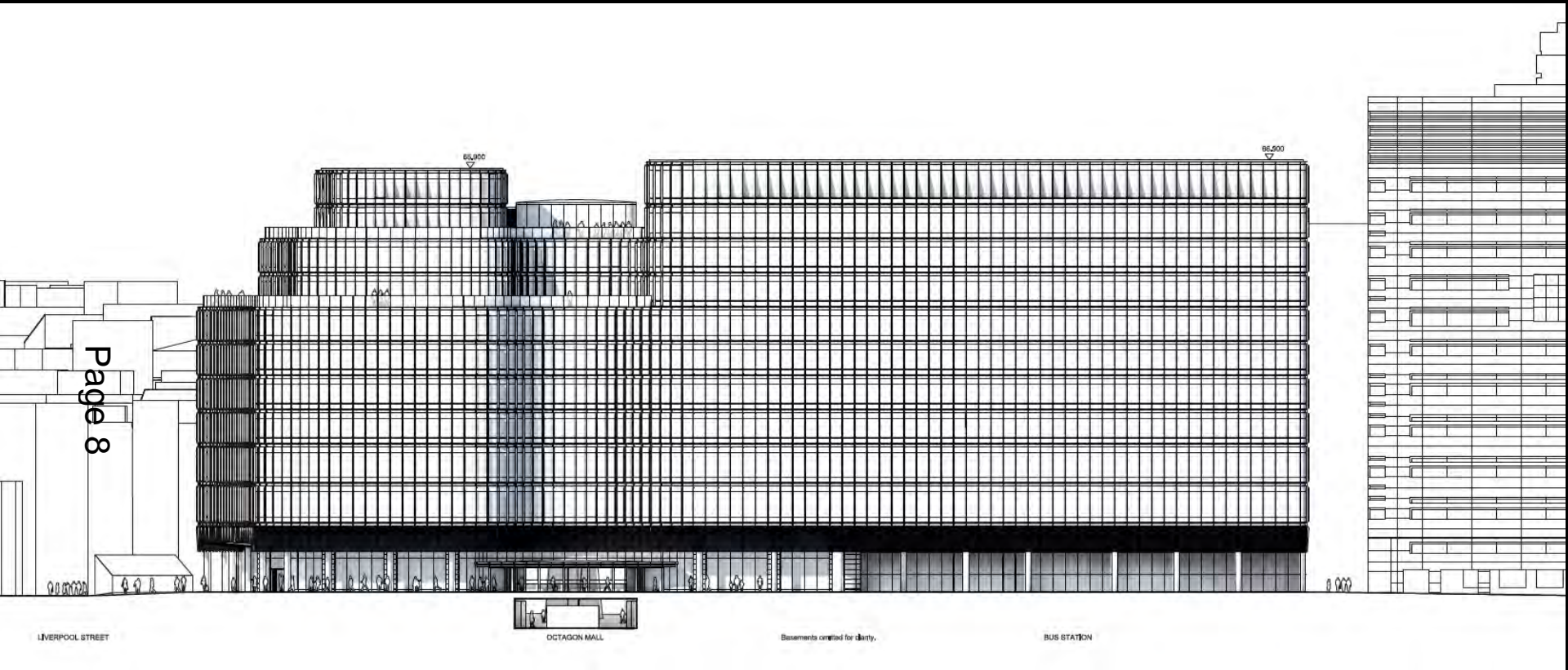
Page 7



Existing east elevation

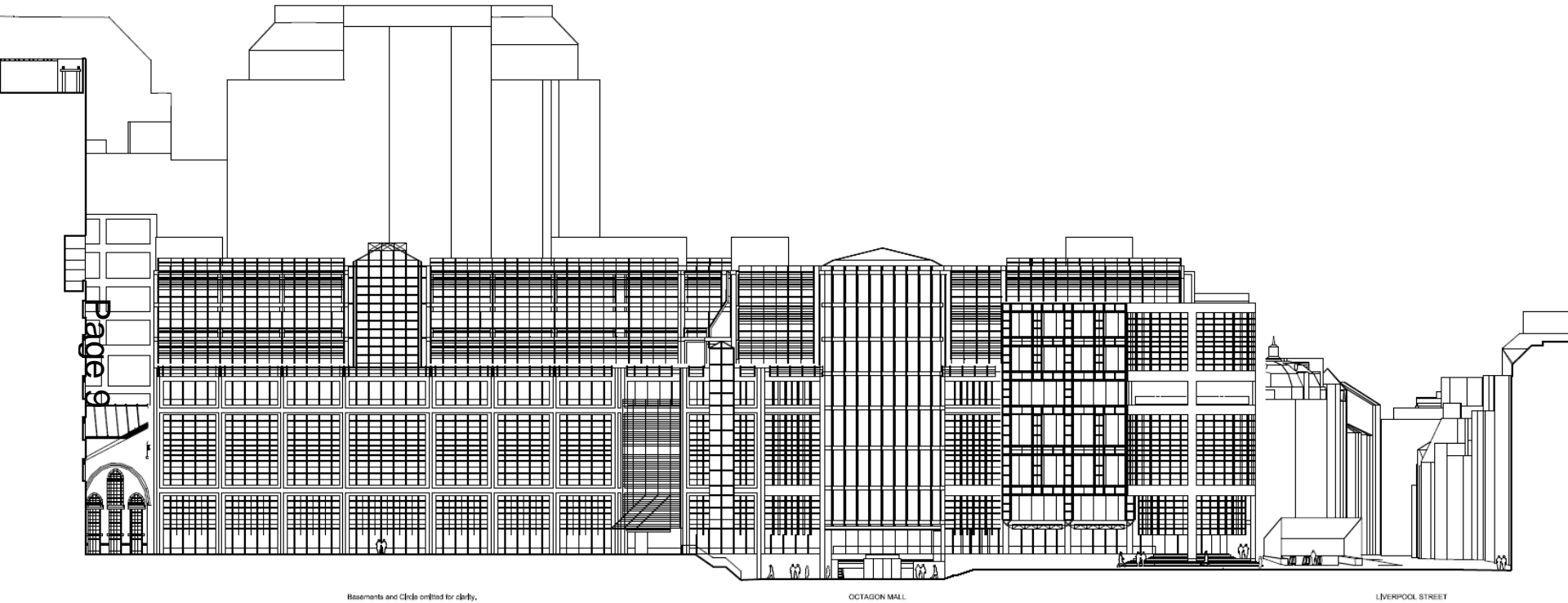
# 100 Liverpool Street and 8-12 Broadgate

Page 8



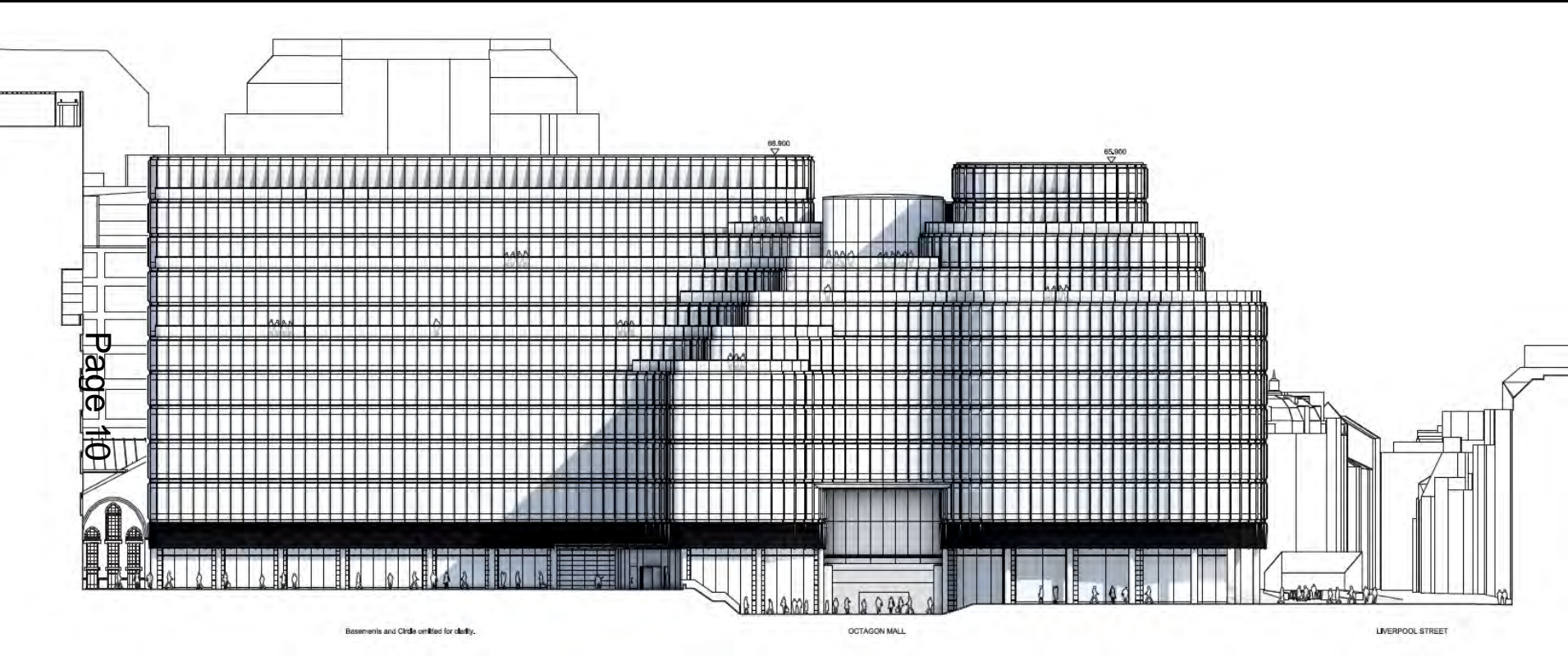
Proposed east elevation

# 100 Liverpool Street and 8-12 Broadgate



Existing west elevation

# 100 Liverpool Street and 8-12 Broadgate



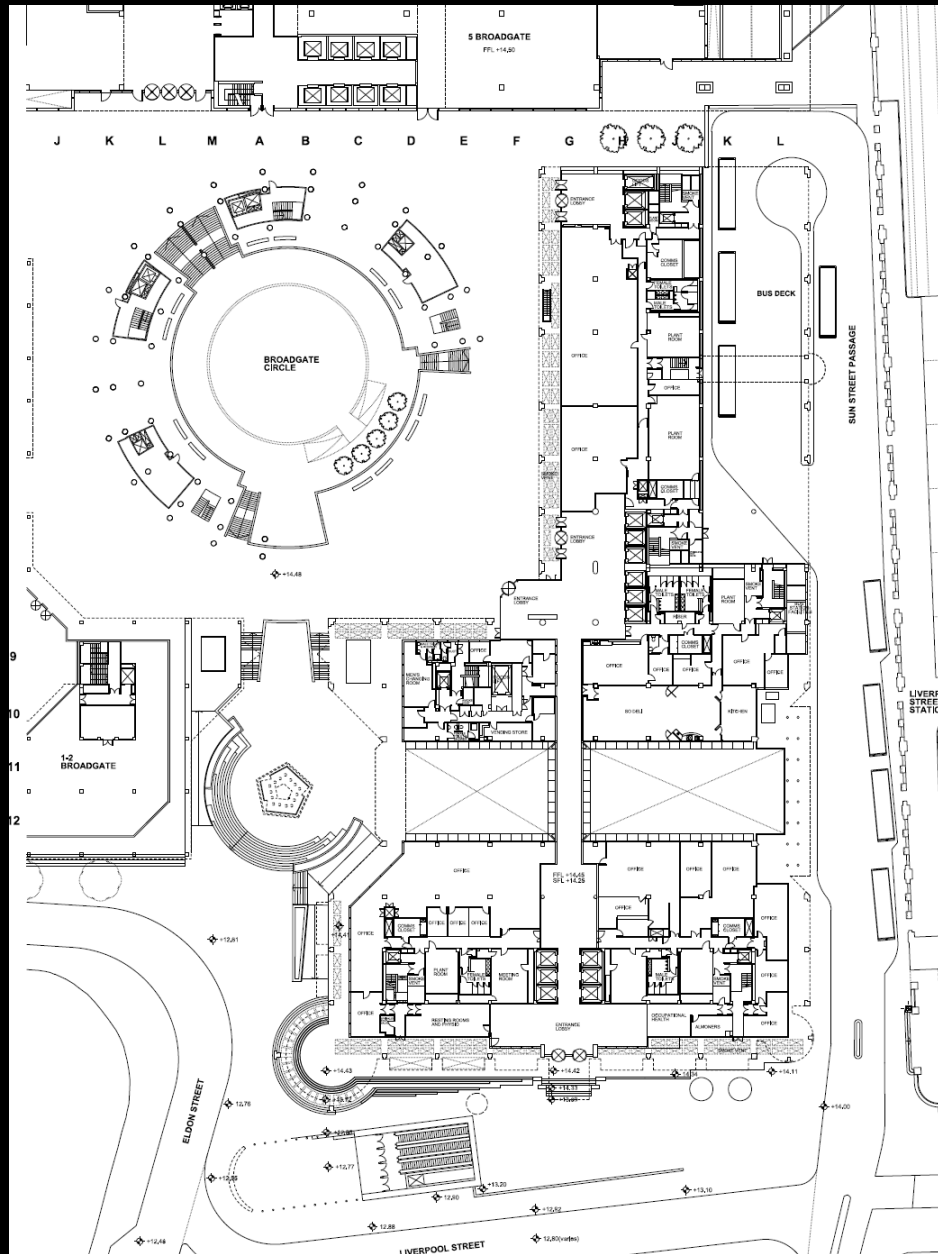
Proposed west elevation

# 100 Liverpool Street and 8-12 Broadgate



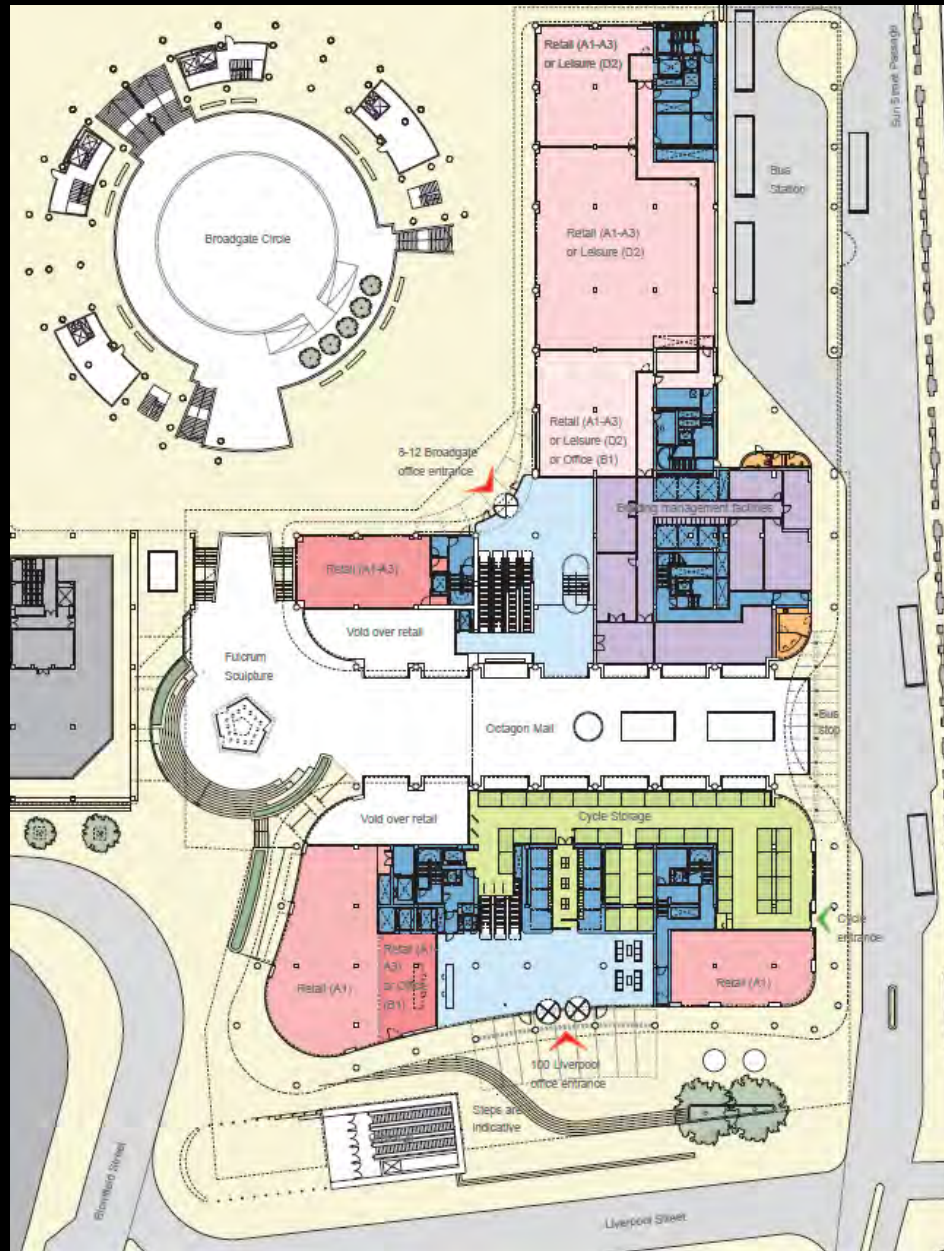
Proposed north elevation

# 100 Liverpool Street and 8-12 Broadgate



Existing ground floor plan

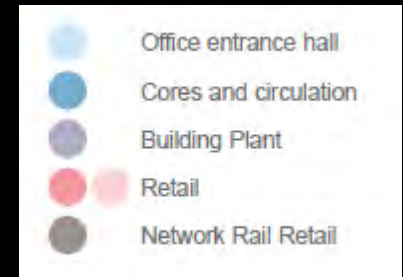
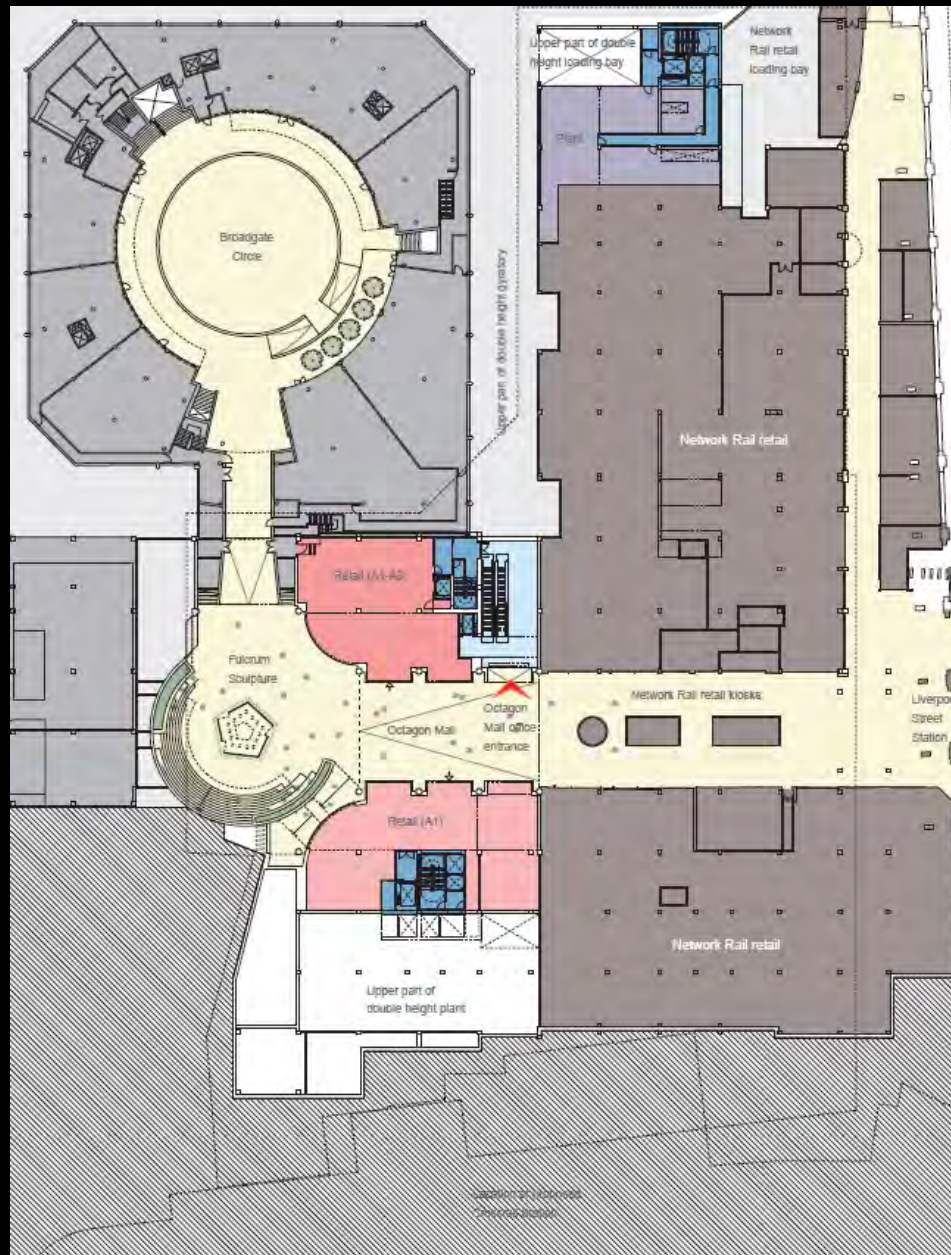
# 100 Liverpool Street and 8-12 Broadgate



- Office entrance hall / reception
- Cores and circulation
- Retail (various uses as identified in plan)
- Cycle storage
- Building management facilities
- Bus station facilities

Proposed development at ground level

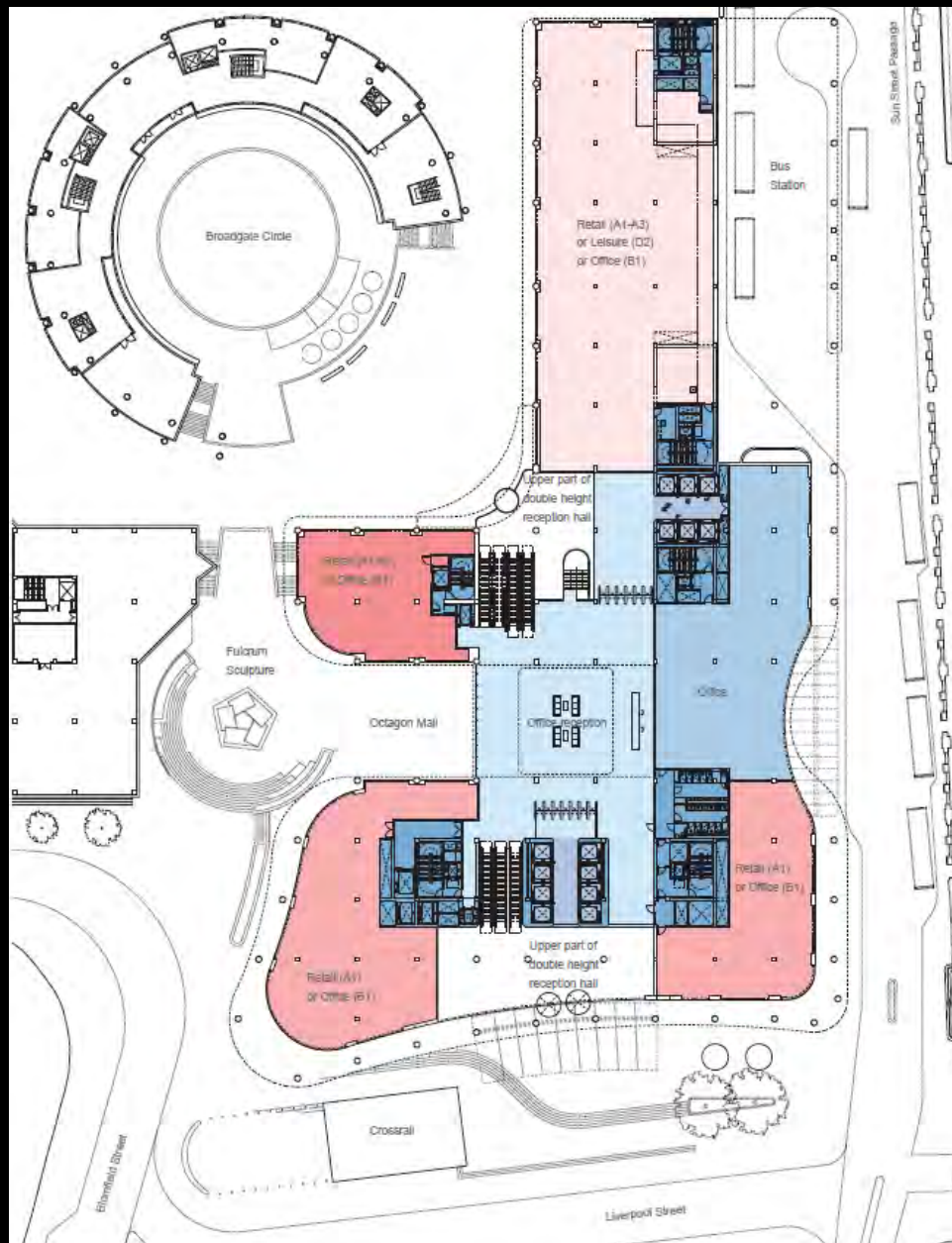
# 100 Liverpool Street and 8-12 Broadgate



Proposed development at lower ground level



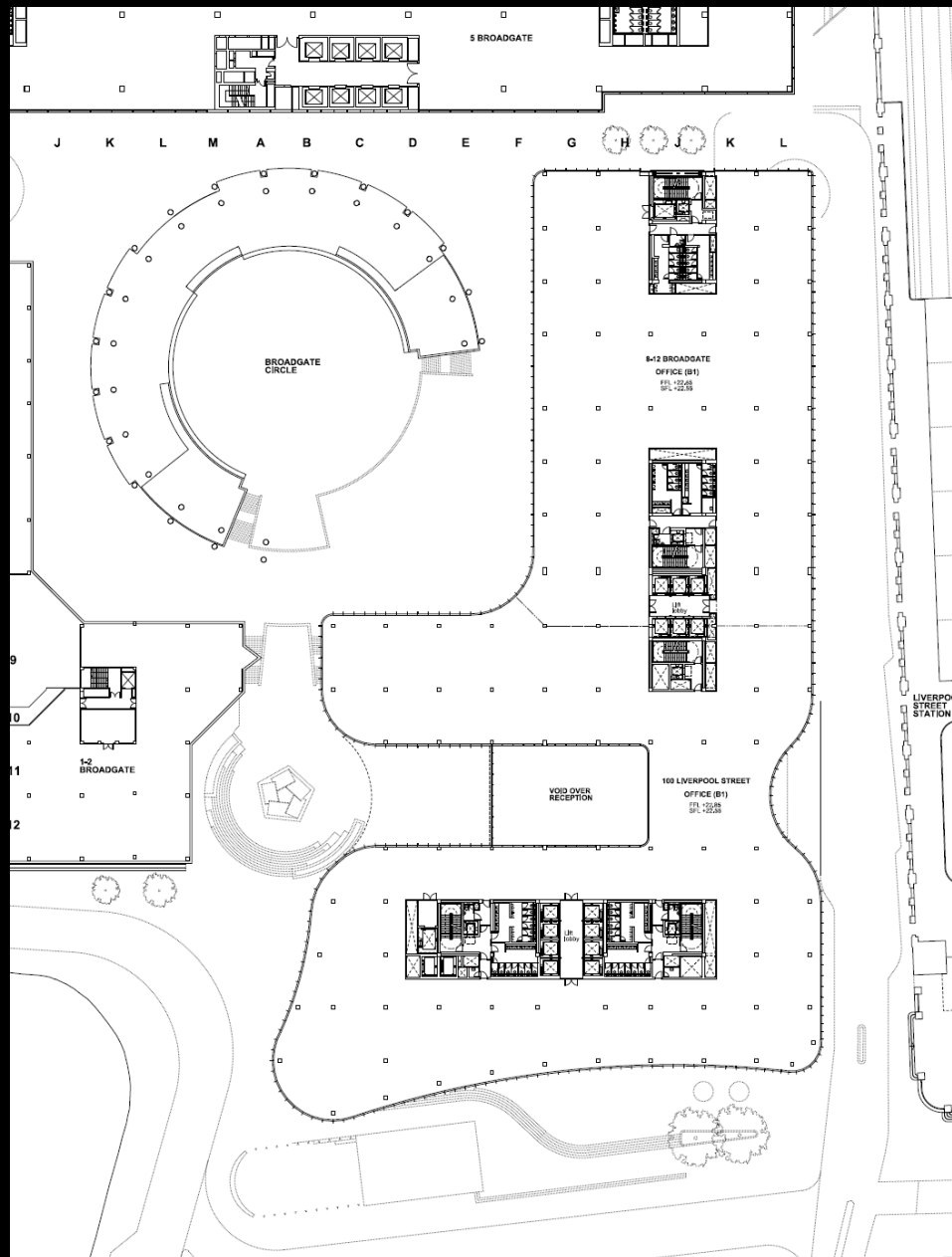
# 100 Liverpool Street and 8-12 Broadgate



- Office entrance hall / reception
- Cores and circulation
- Office
- Retail (flexible use)

Proposed development at level 1

# 100 Liverpool Street and 8-12 Broadgate



Proposed level 2 plan

# 100 Liverpool Street and 8-12 Broadgate



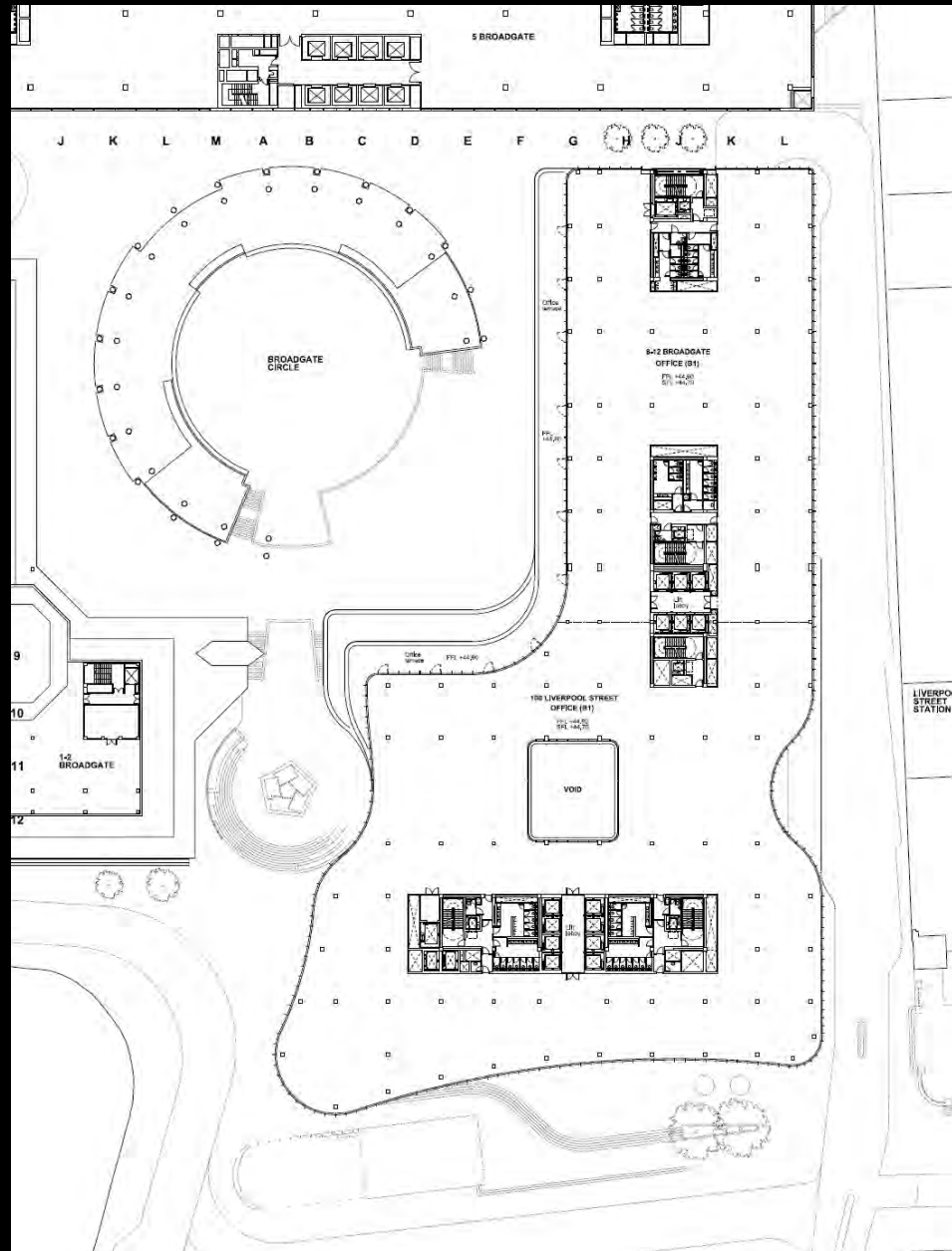
Proposed level 3 plan

# 100 Liverpool Street and 8-12 Broadgate



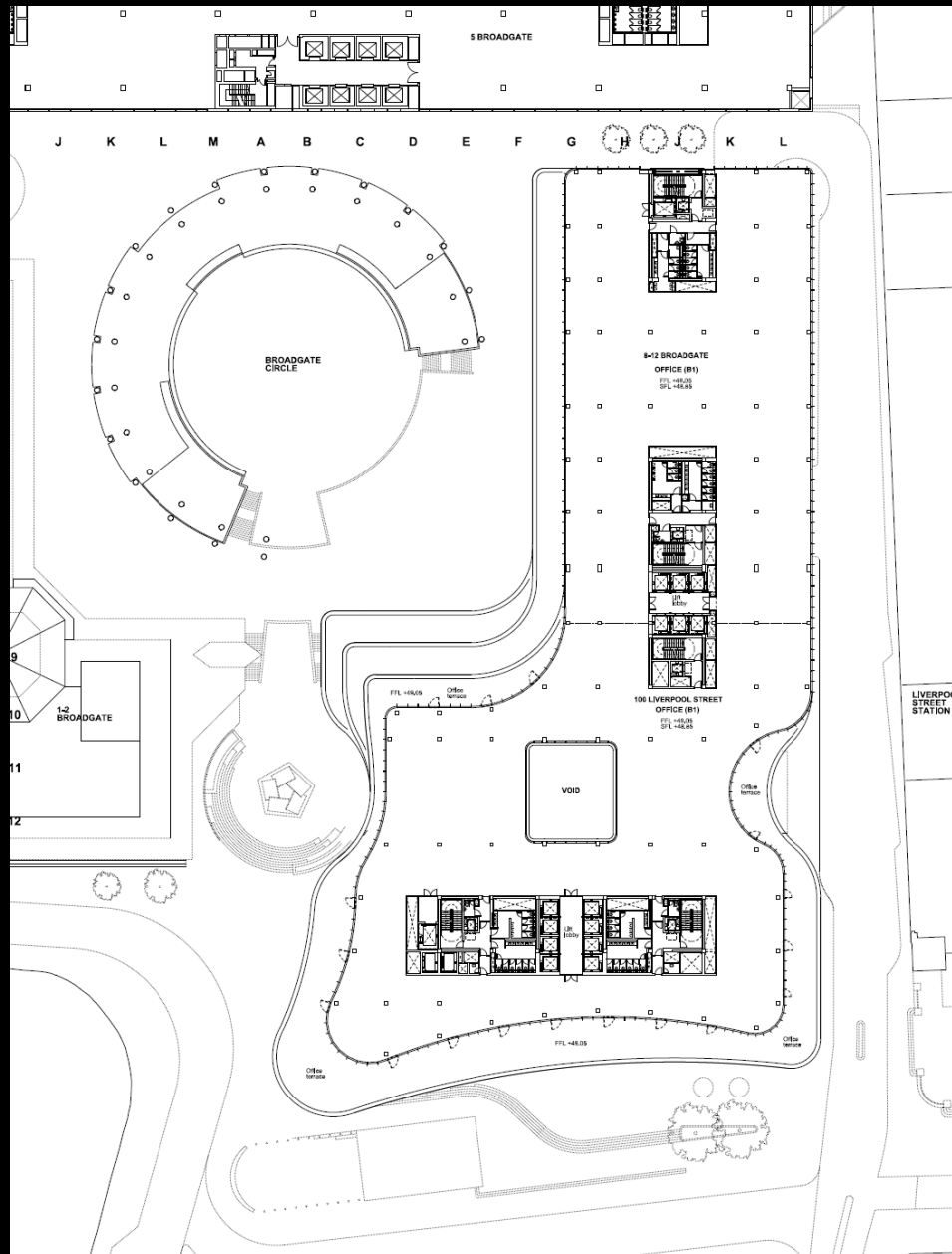
Proposed level 6 plan

# 100 Liverpool Street and 8-12 Broadgate



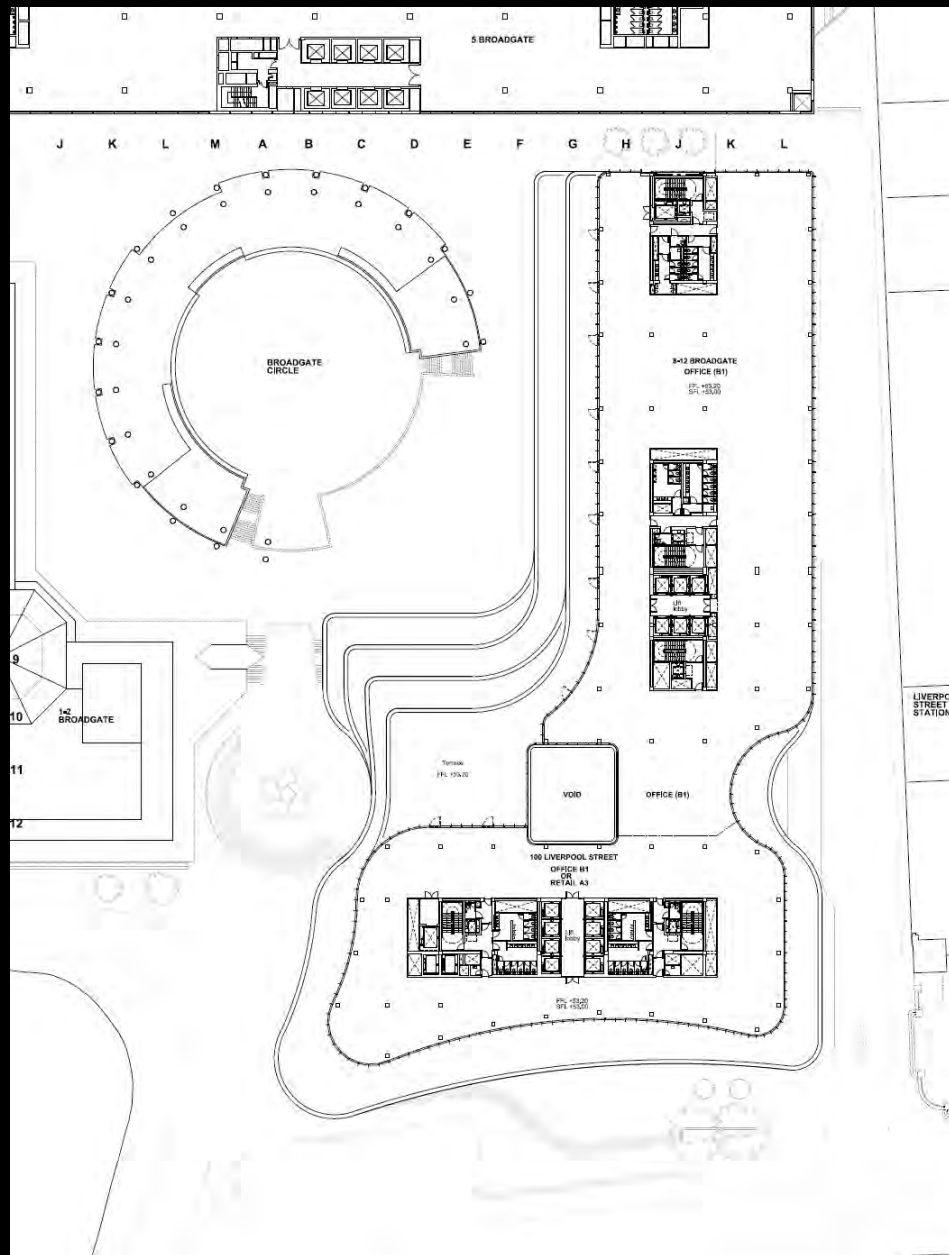
Proposed level 7 plan

# 100 Liverpool Street and 8-12 Broadgate



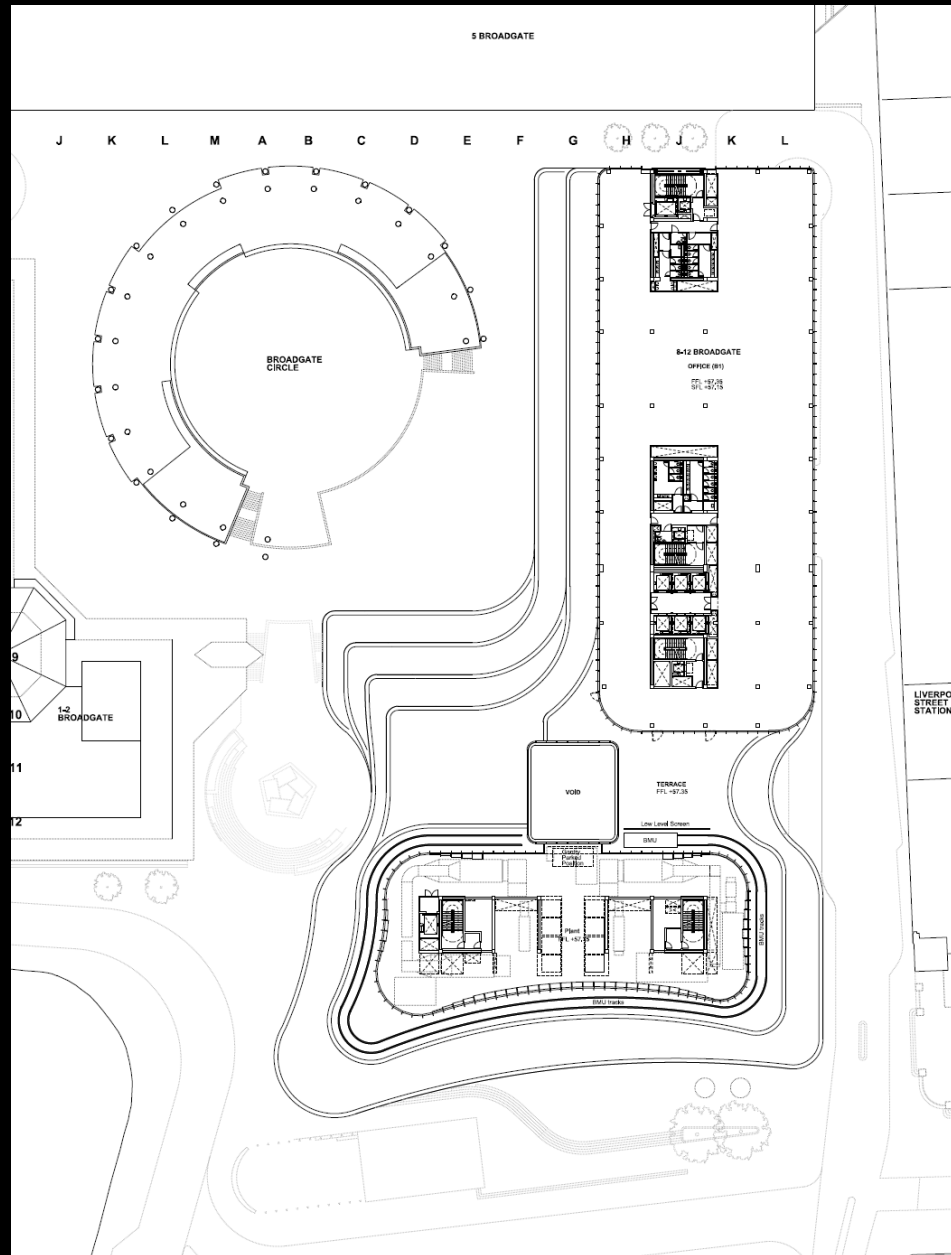
Proposed level 8 plan

# 100 Liverpool Street and 8-12 Broadgate



Proposed level 9 plan

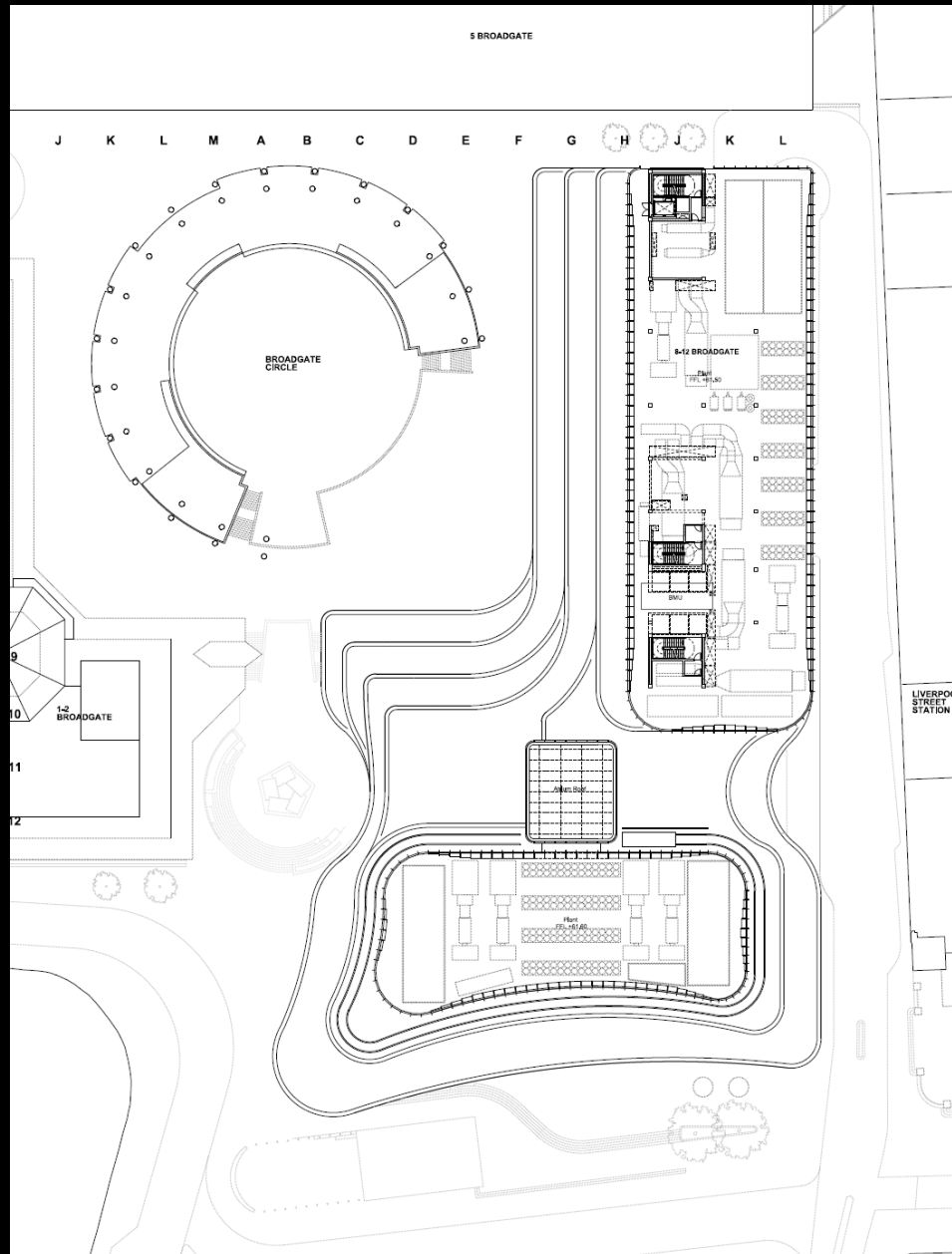
# 100 Liverpool Street and 8-12 Broadgate



Proposed level 10 plan



# 100 Liverpool Street and 8-12 Broadgate



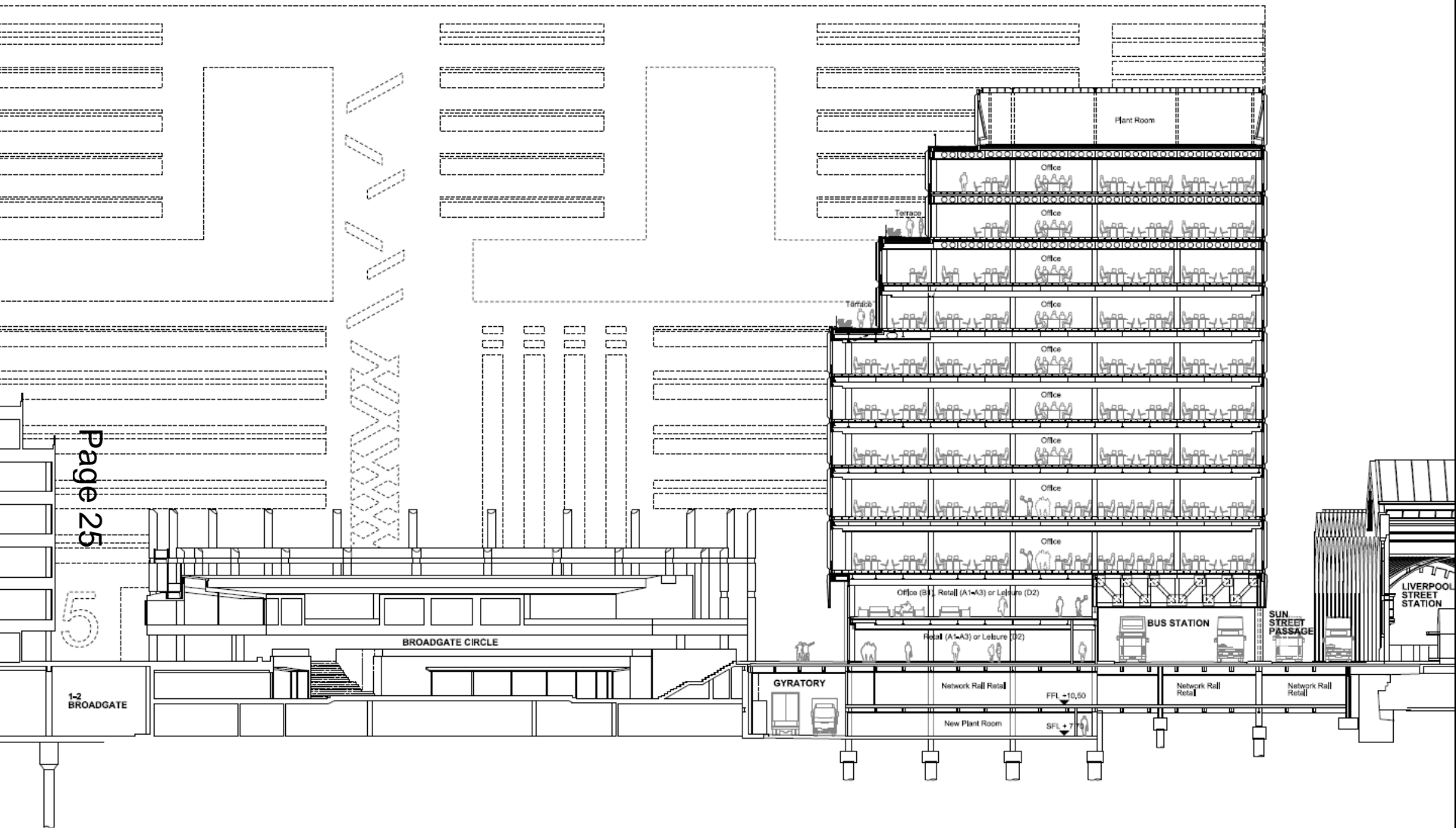
Proposed plant level plan

# 100 Liverpool Street and 8-12 Broadgate



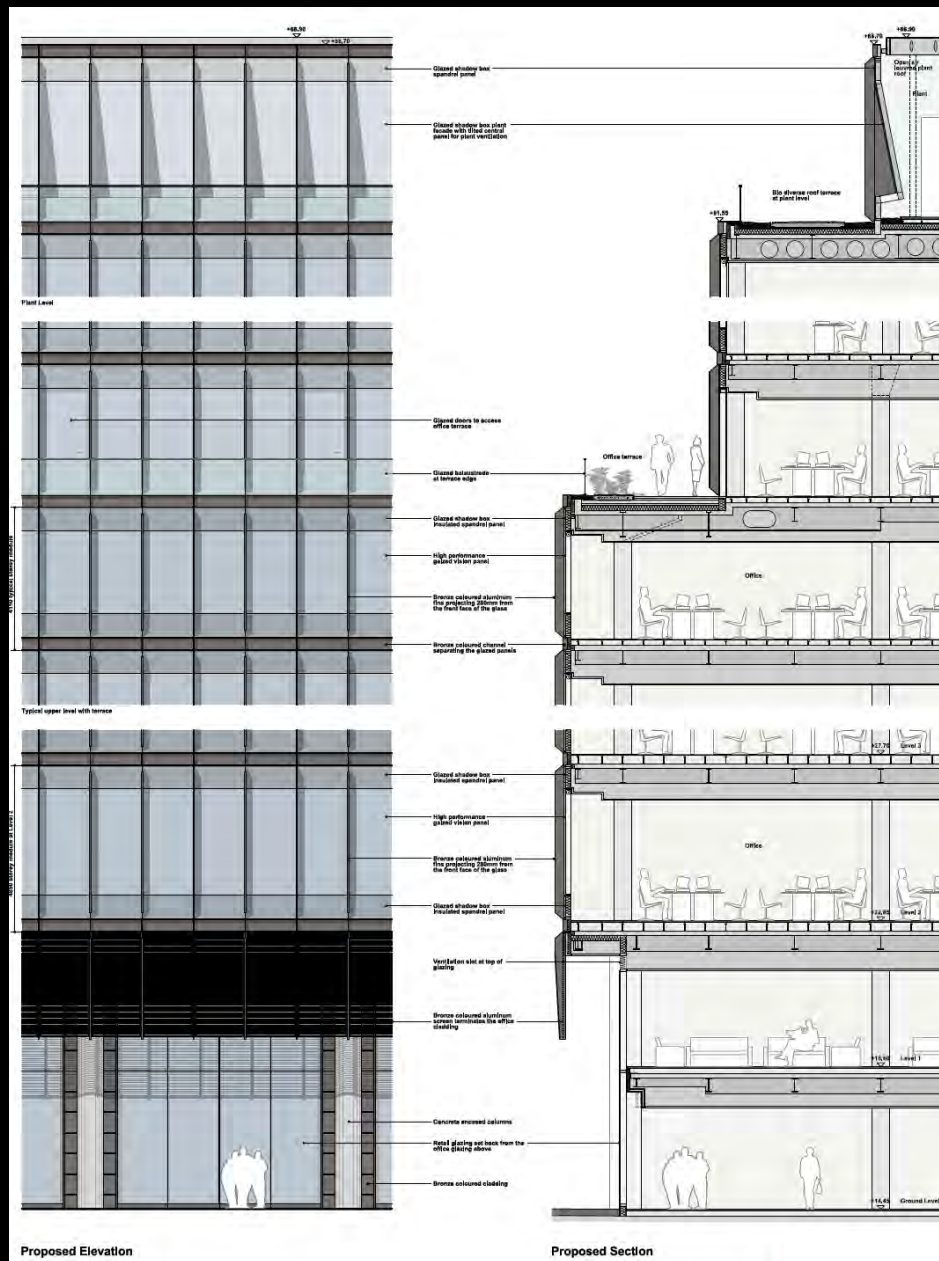
Proposed roof level plan

# 100 Liverpool Street and 8-12 Broadgate



Proposed section through 8-12 Broadgate looking north

# 100 Liverpool Street and 8-12 Broadgate



Proposed Elevation

Proposed Section

## Proposed façade detail – 8-12 Broadgate (west)

# 100 Liverpool Street and 8-12 Broadgate

Page 27



Existing view from Liverpool Street looking north-west

# 100 Liverpool Street and 8-12 Broadgate

Page 28



Proposed view from Liverpool Street looking north-west

# 100 Liverpool Street and 8-12 Broadgate



Existing view from Liverpool Street looking west

# 100 Liverpool Street and 8-12 Broadgate



Proposed view from Liverpool Street looking west



# 100 Liverpool Street and 8-12 Broadgate



Existing view from Liverpool Street looking north-west

# 100 Liverpool Street and 8-12 Broadgate



Proposed view from Liverpool Street looking north-west

# 100 Liverpool Street and 8-12 Broadgate



Page 33

Existing view from junction of Finsbury Circus and Blomfield Street looking north-east

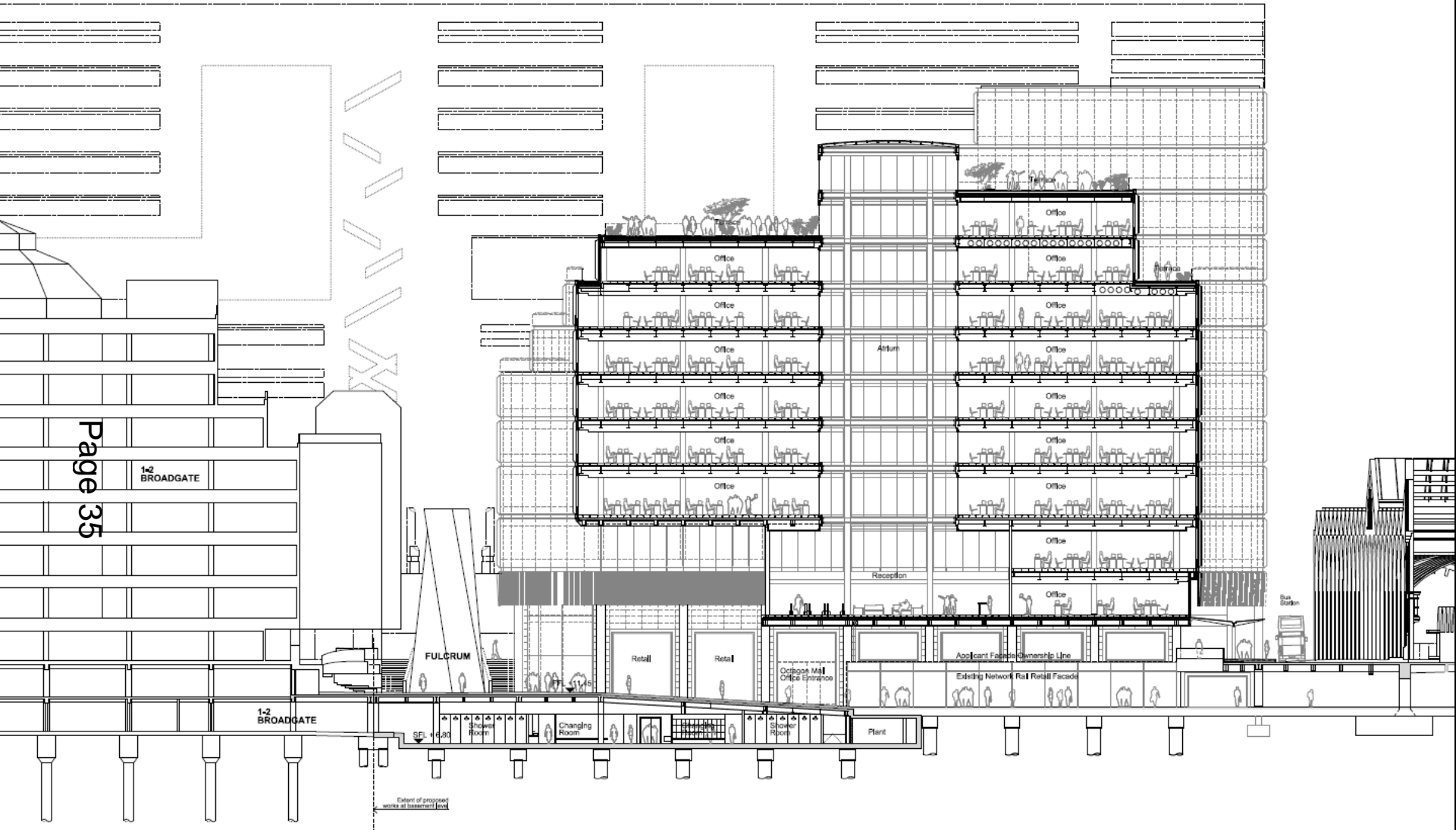
# 100 Liverpool Street and 8-12 Broadgate



Page 34

Proposed view from junction of Finsbury Circus and Blomfield Street looking north-east

# 100 Liverpool Street and 8-12 Broadgate



Proposed section through Octagon Mall looking north

# 100 Liverpool Street and 8-12 Broadgate



Page 36

Existing view from within Broadgate Estate looking north-east

# 100 Liverpool Street and 8-12 Broadgate



Page 3

Proposed view from within Broadgate Estate looking north-east

# 100 Liverpool Street and 8-12 Broadgate



Page 38

Existing view across Broadgate Circle looking south



# 100 Liverpool Street and 8-12 Broadgate



Page 39

Proposed view across Broadgate Circle looking south

# 100 Liverpool Street and 8-12 Broadgate

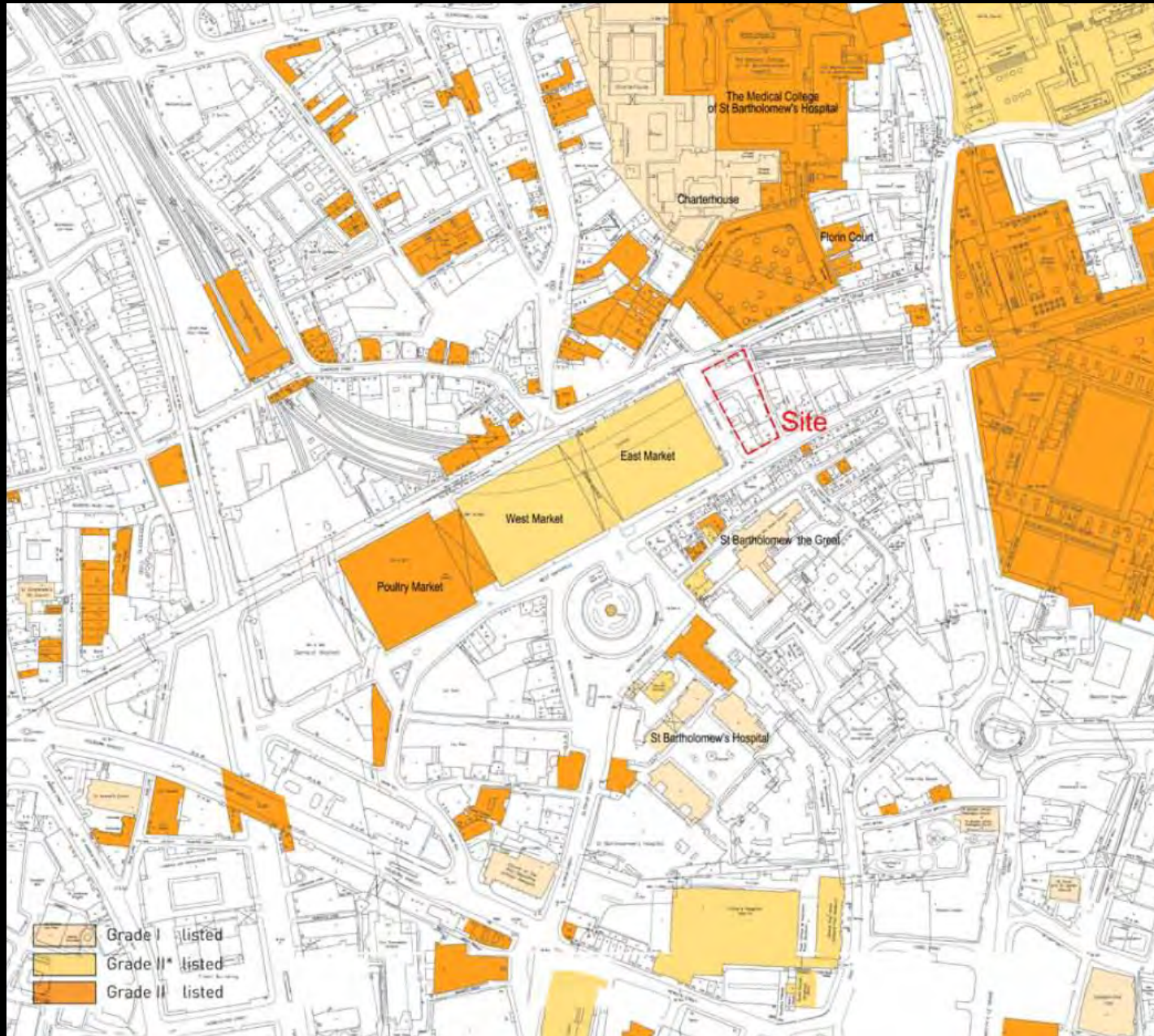
Page 40



Proposed view looking northeast at junction of Blomfield Street and Liverpool Street



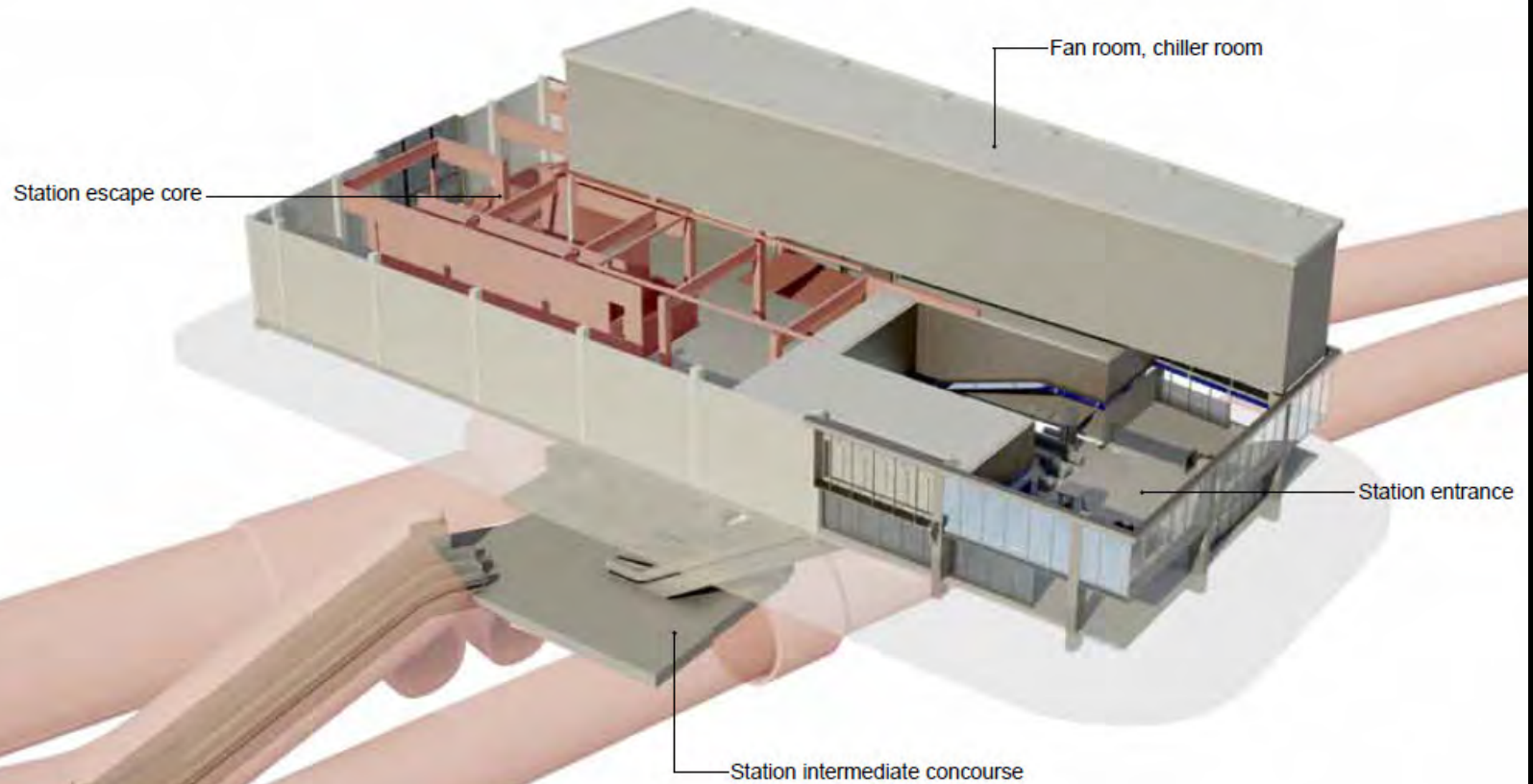
# Farringdon East Crossrail Oversight Development



Site location plan

# Farringdon East Crossrail Oversight Development

Page 42



Proposed Farringdon East ticket hall

# Farringdon East Crossrail Oversite Development



Long Lane, at the corner of Rising Sun Court, looking north-east

# Farringdon East Crossrail Oversight Development

Page 45



Long Lane, looking north along Hayne Street

# Farringdon East Crossrail Oversight Development

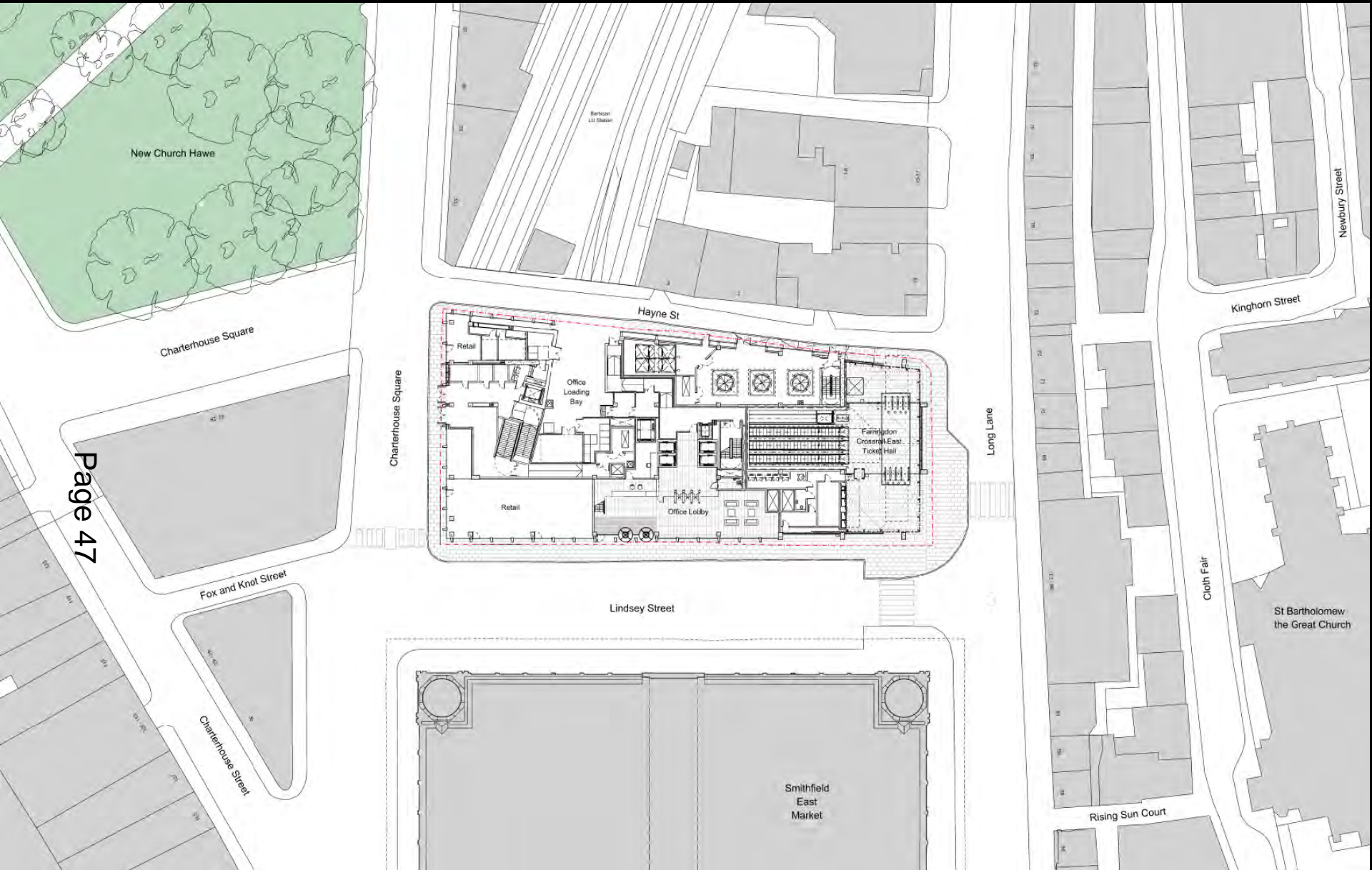
Page 46



Lindsey Street, looking south-east

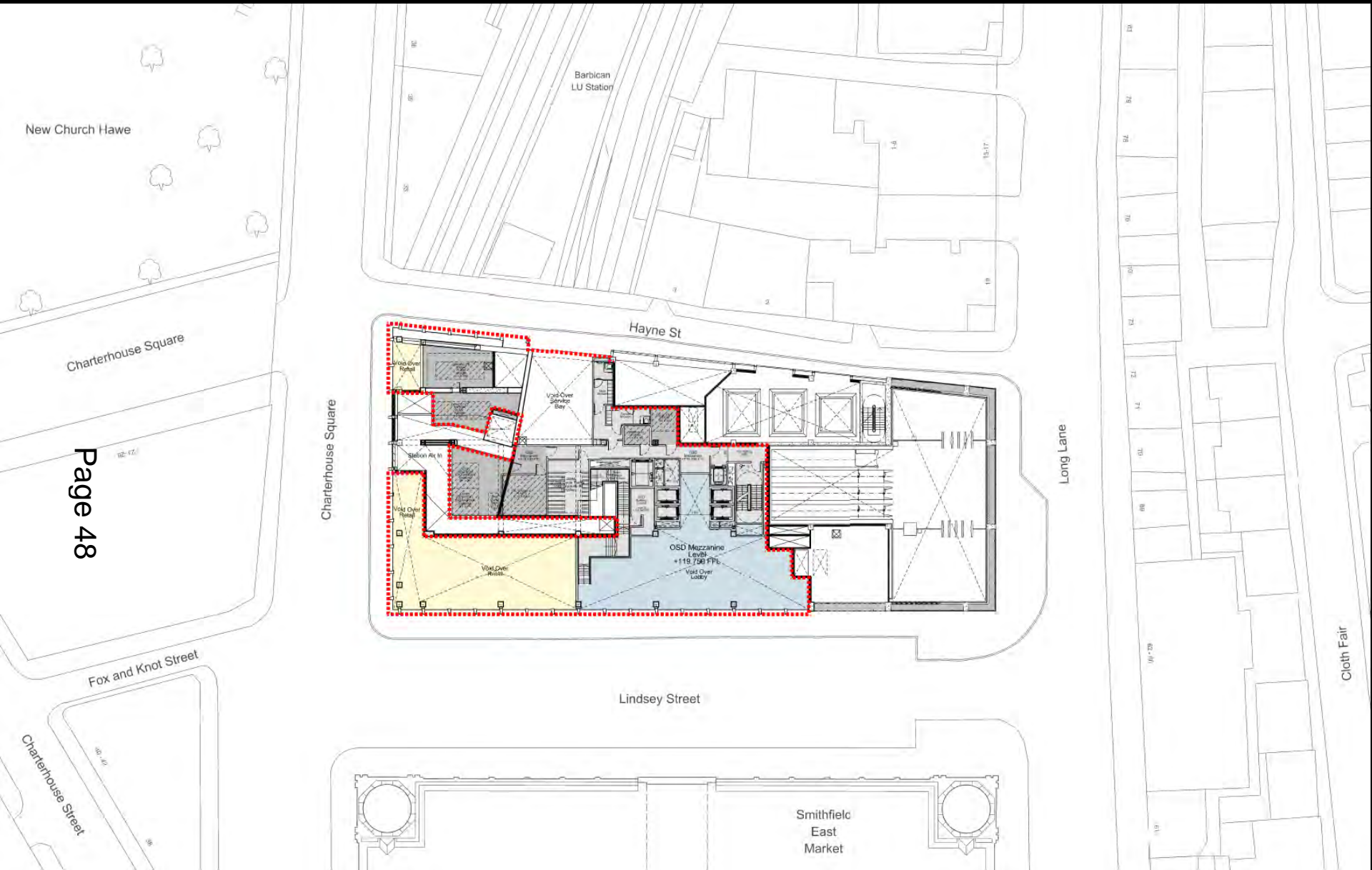


# Farringdon East Crossrail Oversight Development



Proposed context plan

# Farringdon East Crossrail Oversight Development



New Church Hawe

Barbican  
LU Station

Charterhouse Square

Hayne St

Charterhouse Square

Long Lane

Page 48

Fox and Knot Street

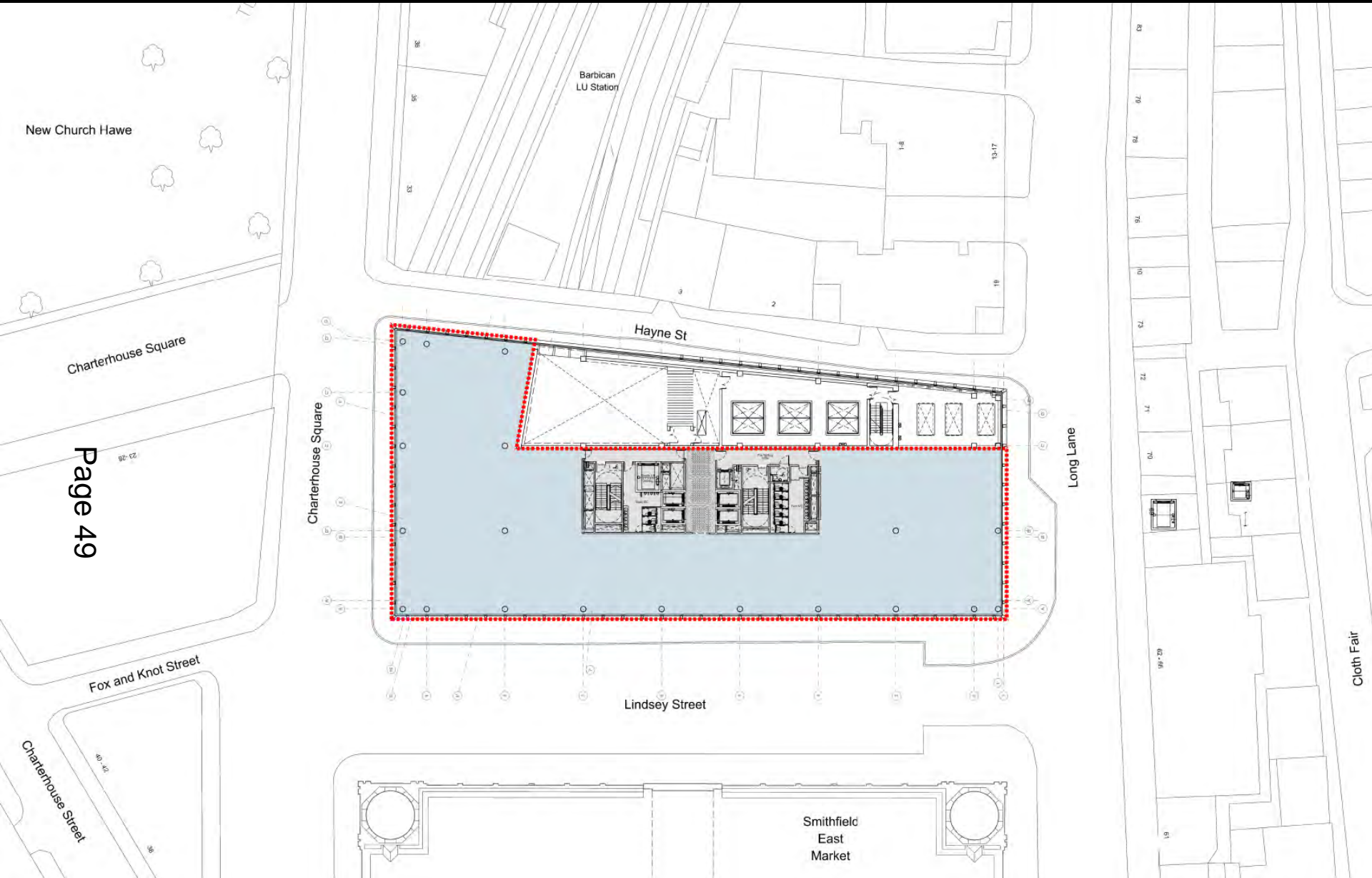
Lindsey Street

Smithfield  
East  
Market

Cloth Fair

Mezzanine level plan

# Farringdon East Crossrail Oversight Development



New Church Hawe

Barbican  
LU Station

Charterhouse Square

Page 49

Hayne St

Charterhouse Square

Long Lane

Fox and Knot Street

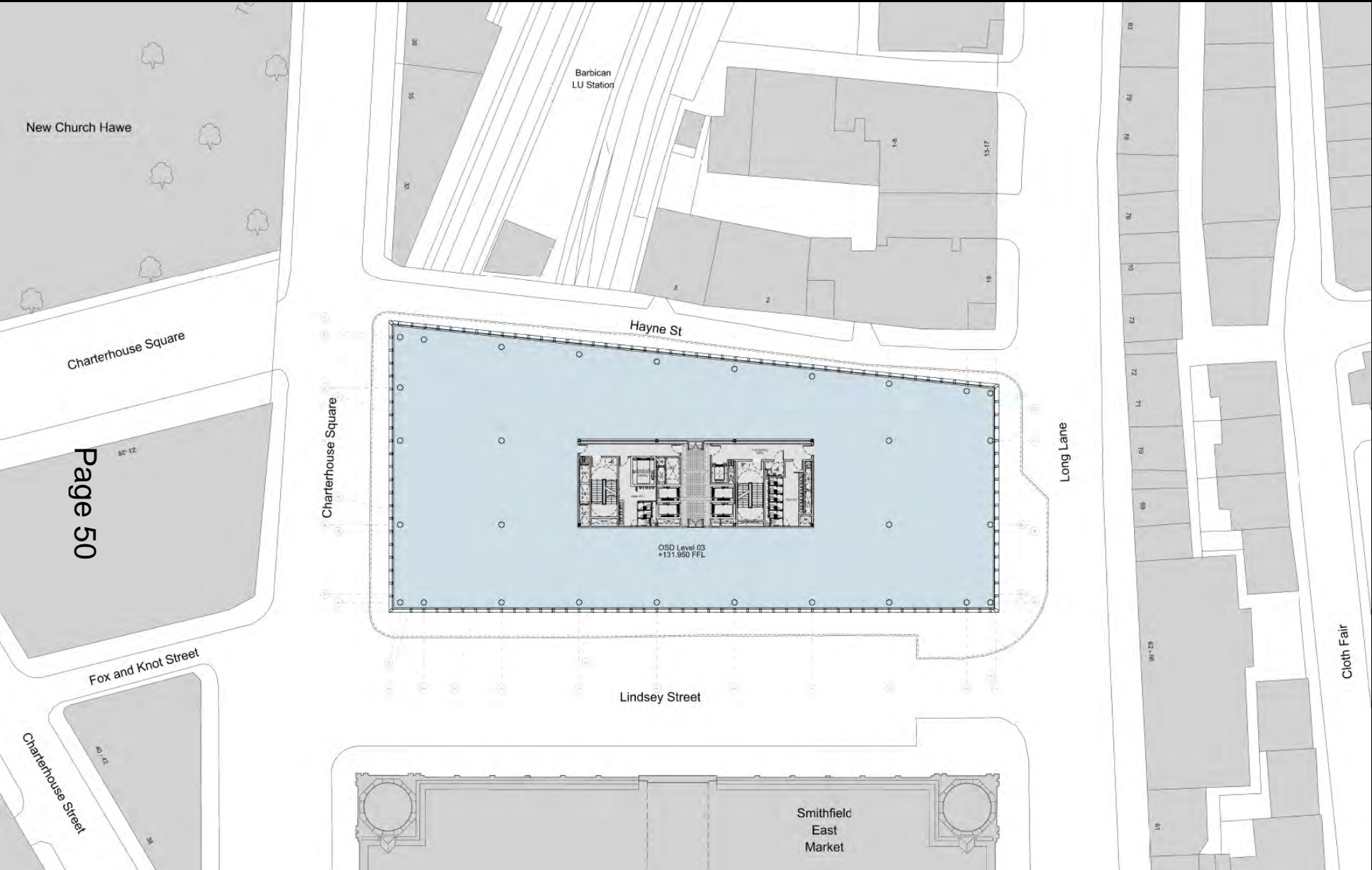
Lindsey Street

Smithfield  
East  
Market

Cloth Fair

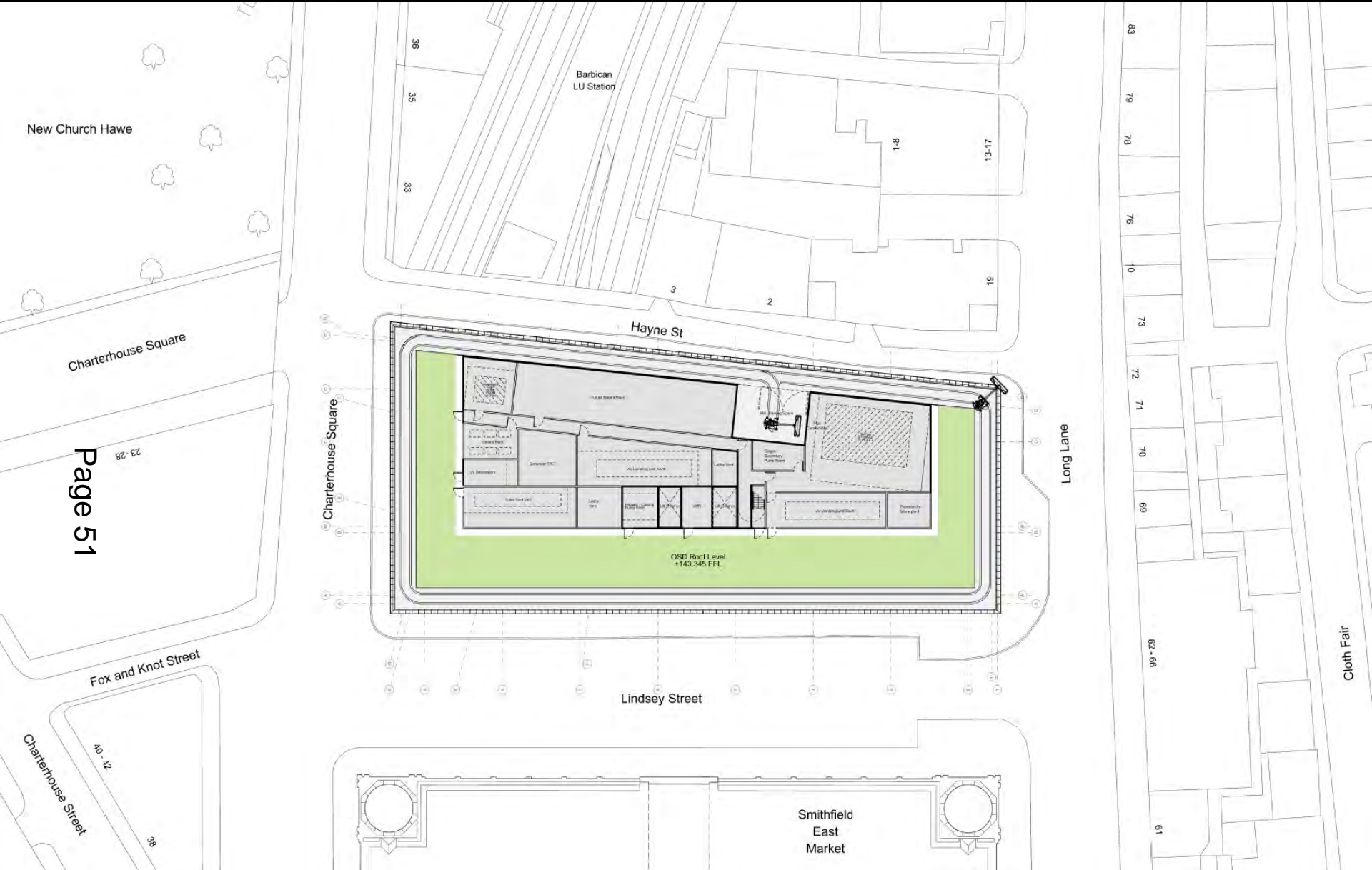
Level 01 plan

# Farringdon East Crossrail Oversight Development



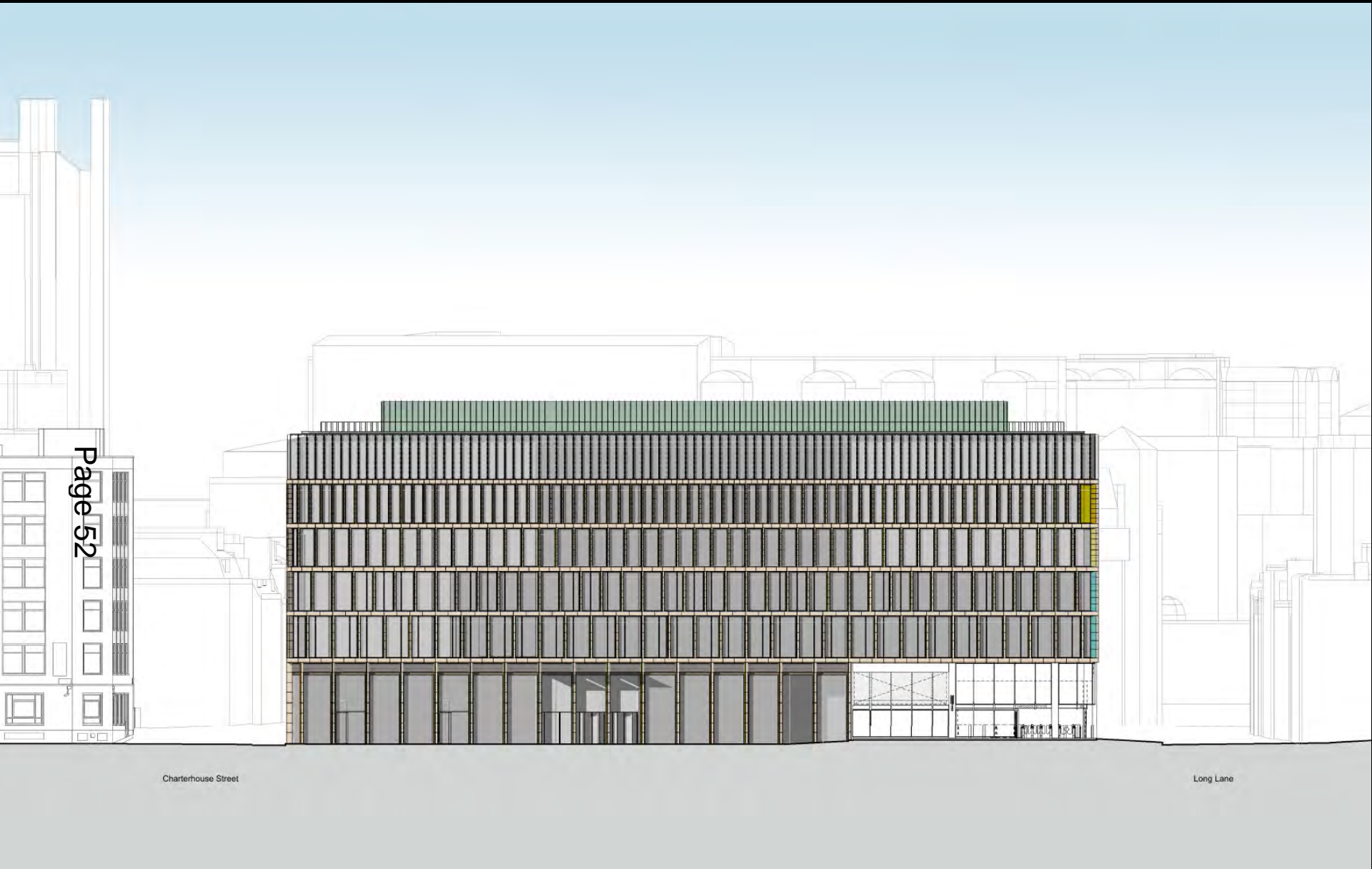
Level 03 plan

# Farringdon East Crossrail Oversight Development



Roof level plan

# Farringdon East Crossrail Oversight Development



Page 52

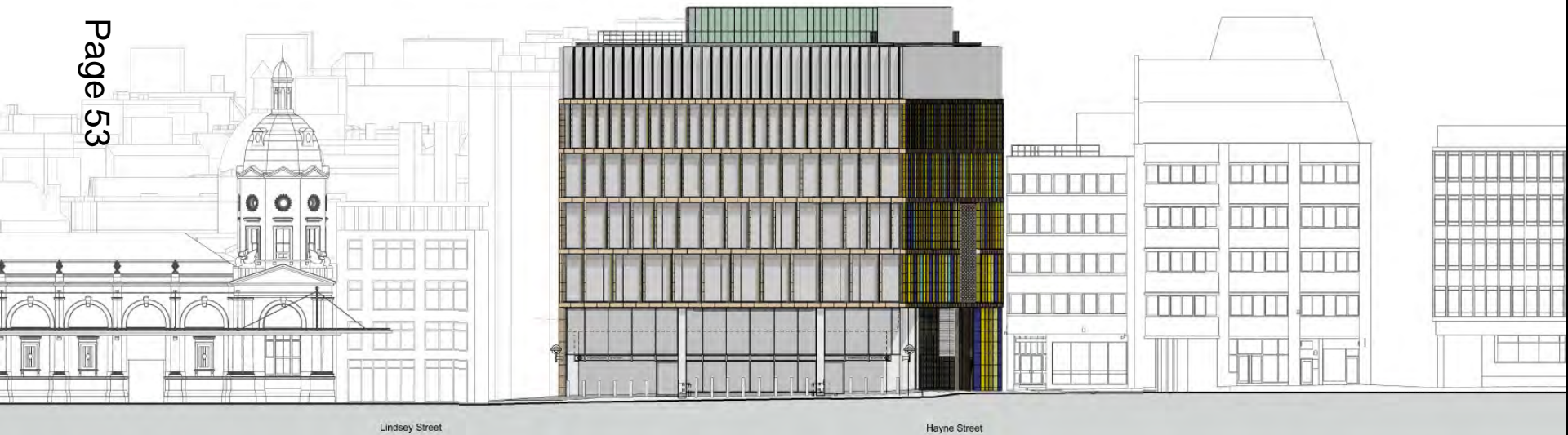
Charterhouse Street

Long Lane

Proposed west elevation

# Farringdon East Crossrail Oversight Development

Page 53



Lindsey Street

Hayne Street

Proposed south elevation

# Farringdon East Crossrail Oversight Development

Page 54



Hayne Street

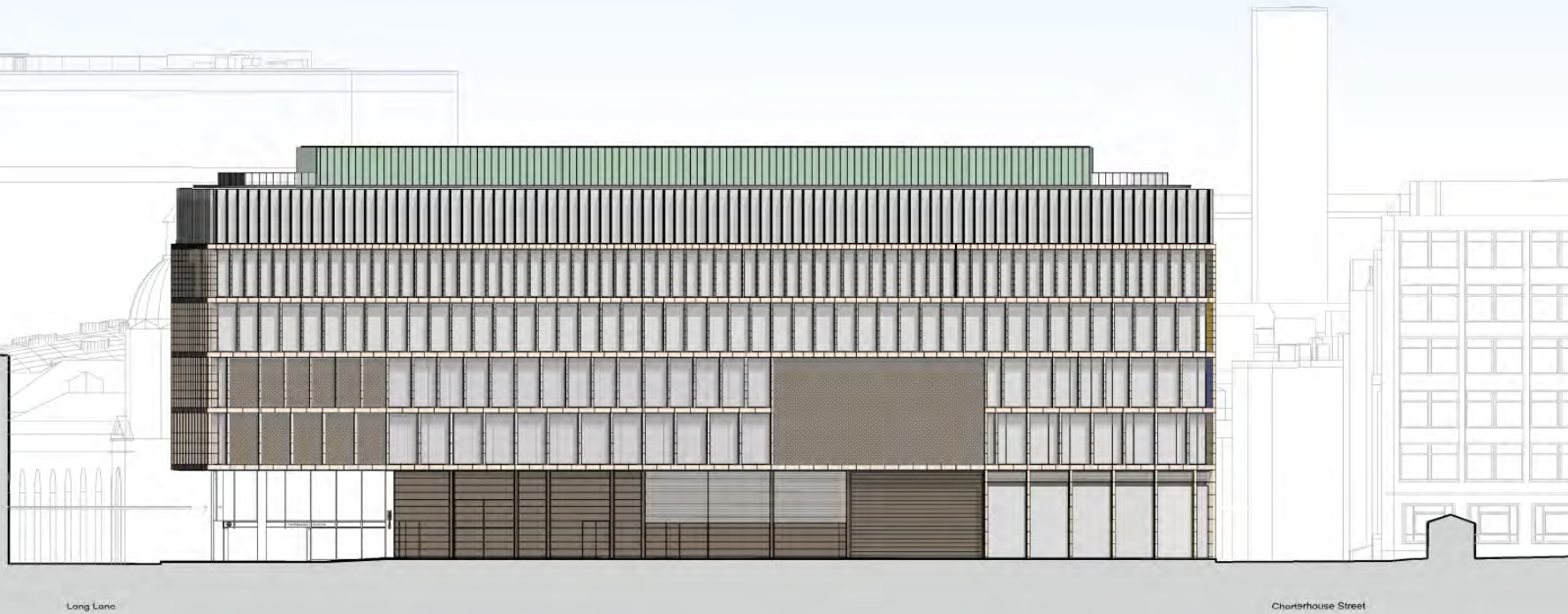
Lindsey Street

Proposed north elevation



# Farringdon East Crossrail Oversight Development

Page 55



Lang Lane

Charterhouse Street

Proposed east elevation

# Farringdon East Crossrail Oversite Development

Page 56



North-east corner of Charterhouse Square: Proposed view looking south-west

# Farringdon East Crossrail Oversight Development



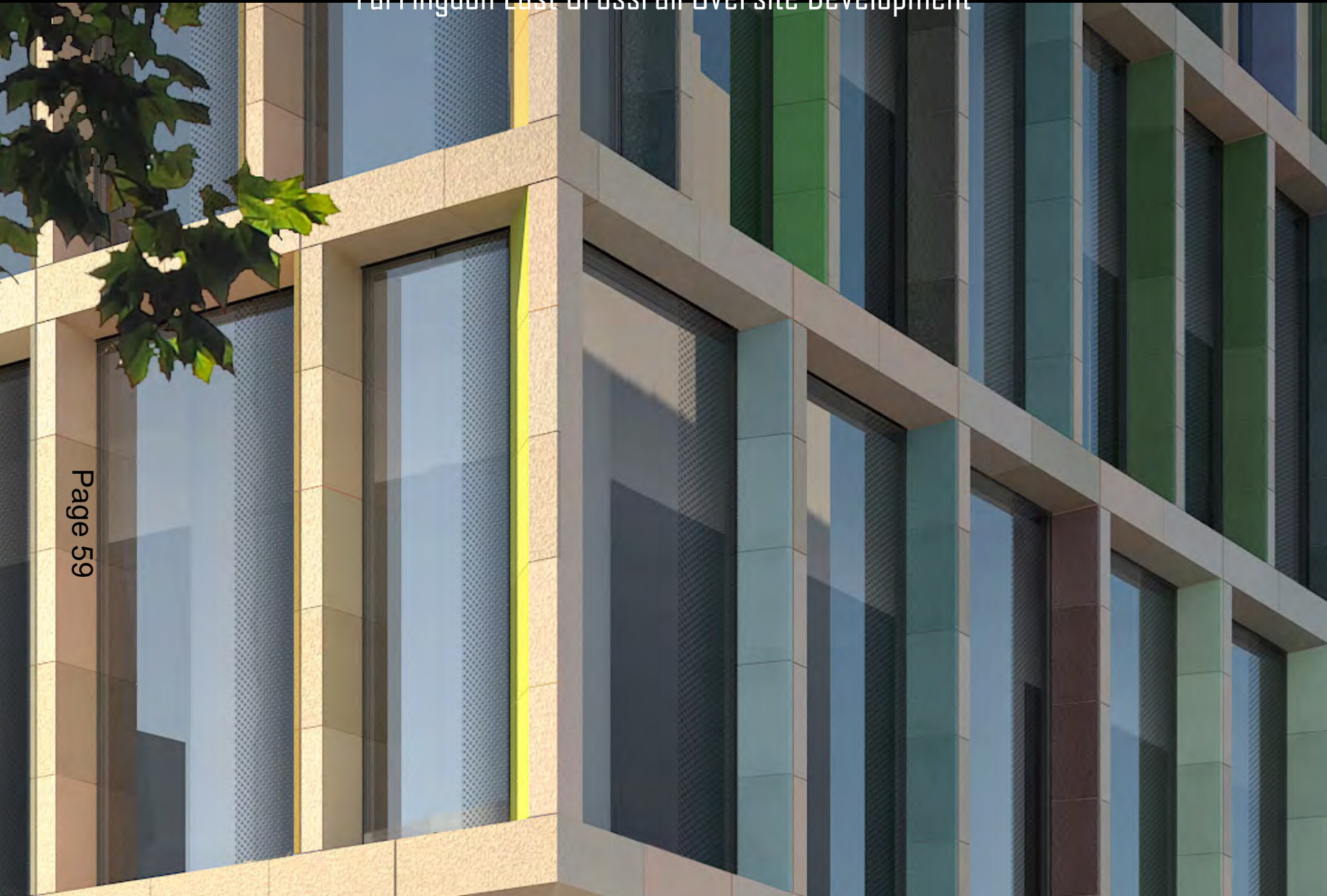
Page 57

East Gate of Charterhouse Square: Proposed view looking south-west

# Farringdon East Crossrail Oversight Development

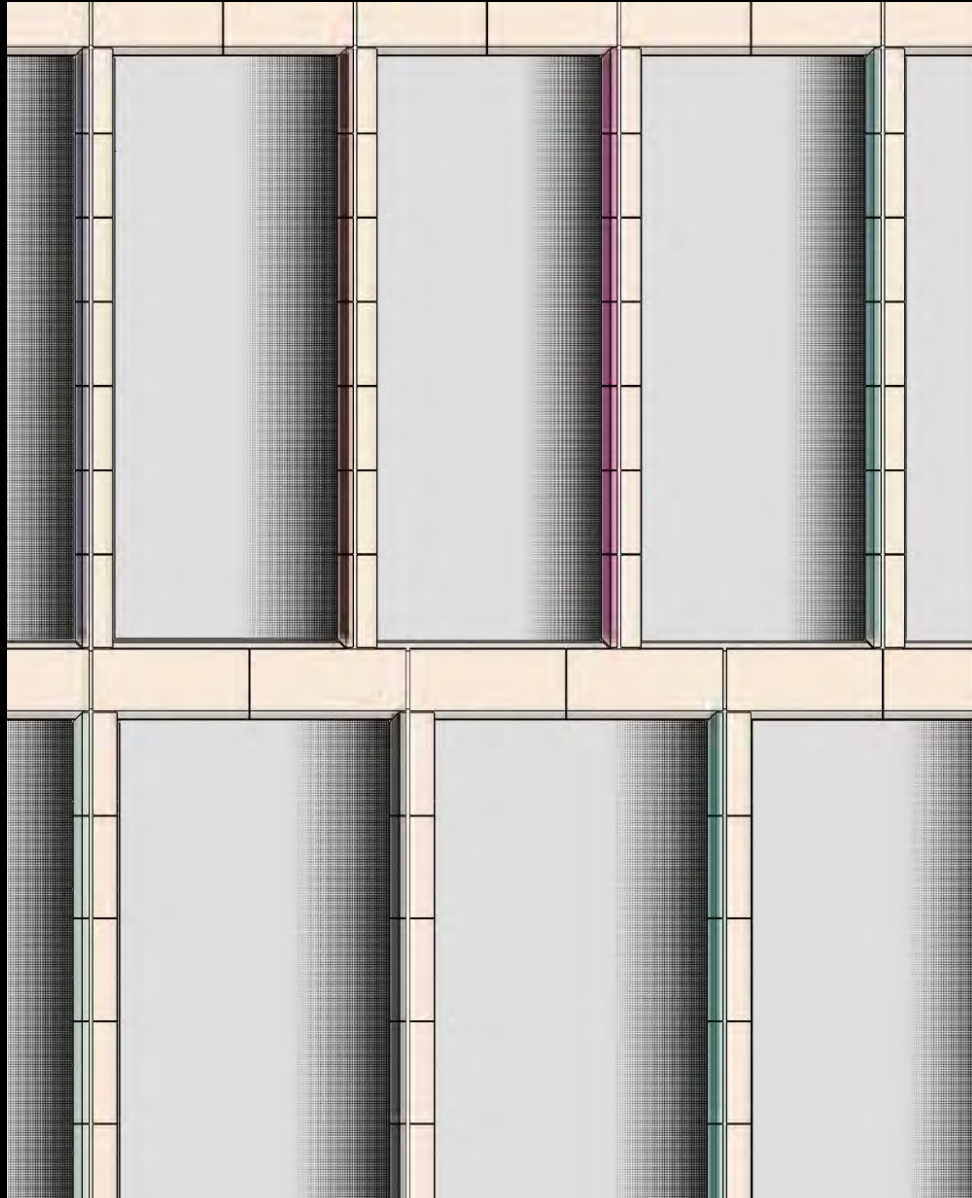


South west gate of Charterhouse Square: Proposed view looking south-west



Fritting detail

# Farringdon East Crossrail Oversight Development



Fritting detail – smaller dots

# Farringdon East Crossrail Oversight Development



Page 61

Charterhouse Street: Proposed view looking east

# Farringdon East Crossrail Oversite Development

Page 62



West Smithfield Rotunda Garden: Proposed view looking north-east



# Farringdon East Crossrail Oversight Development



Long Lane, at the corner of Rising Sun Court: Proposed view looking north-east

# Farringdon East Crossrail Oversight Development

Page 64



Long Lane: Proposed view looking north along Hayne Street

# Farringdon East Crossrail Oversite Development

Page 65



Long Lane beside no.80-83: Proposed view looking west

# Farringdon East Crossrail Oversight Development



Page 66

Lindsey Street: Proposed view looking east



# CHEAPSIDE AND GUILDHALL AREA ENHANCEMENT STRATEGY



Page 68



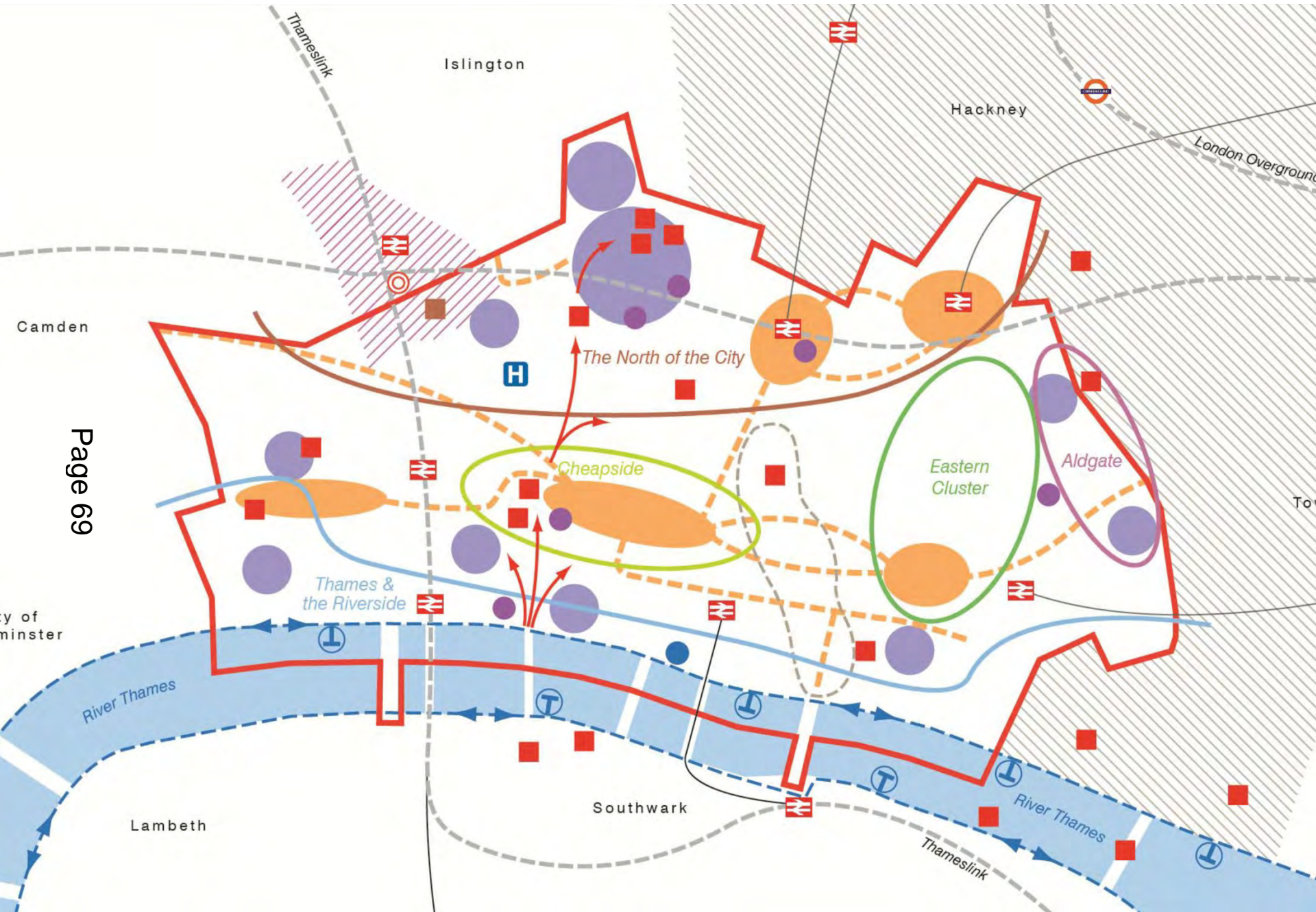
**Planning and  
Transportation Committee**

**12<sup>th</sup> May**

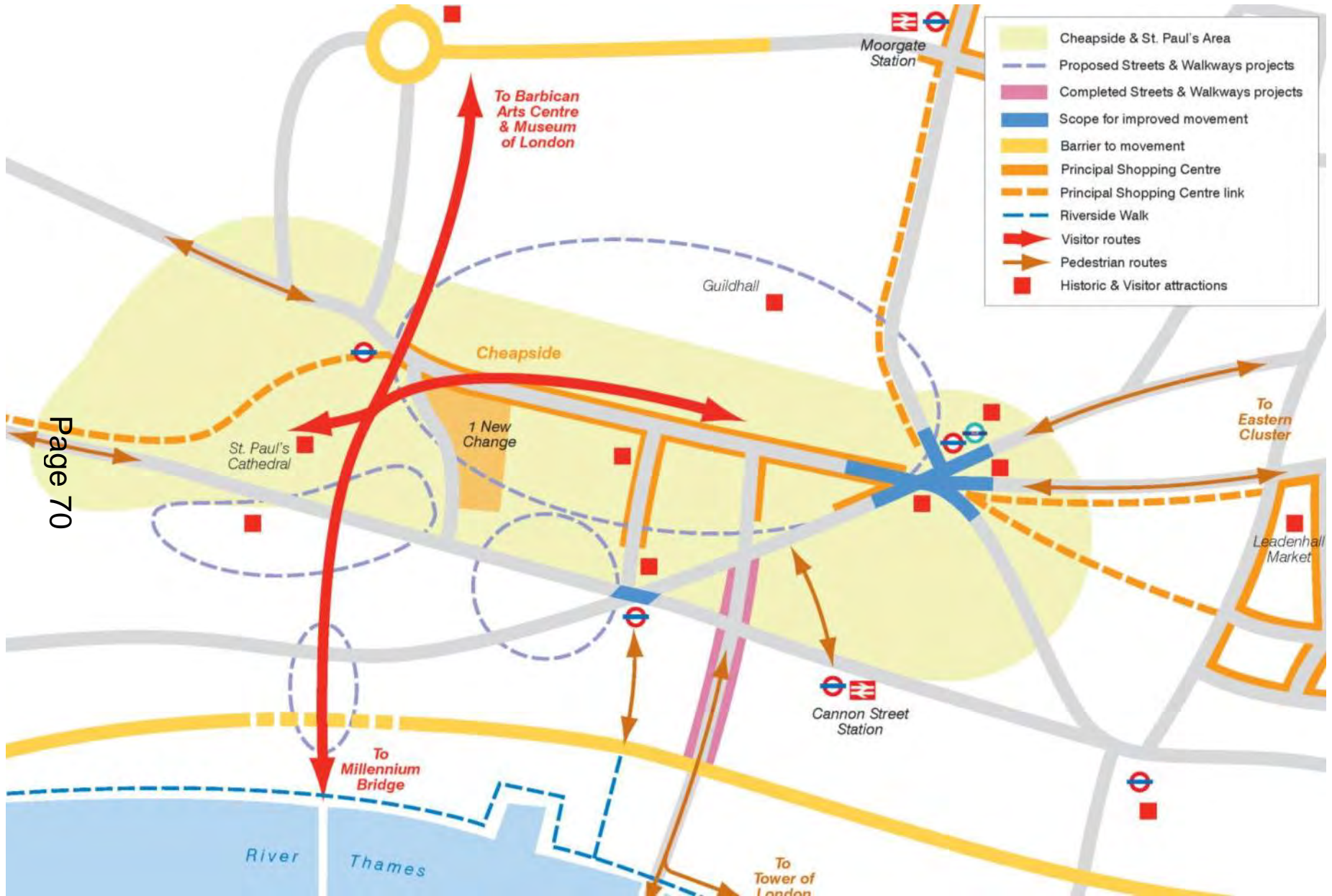


**CHEAPSIDE  
GUILDHALL**

# STRATEGY OVERVIEW - Core Strategy

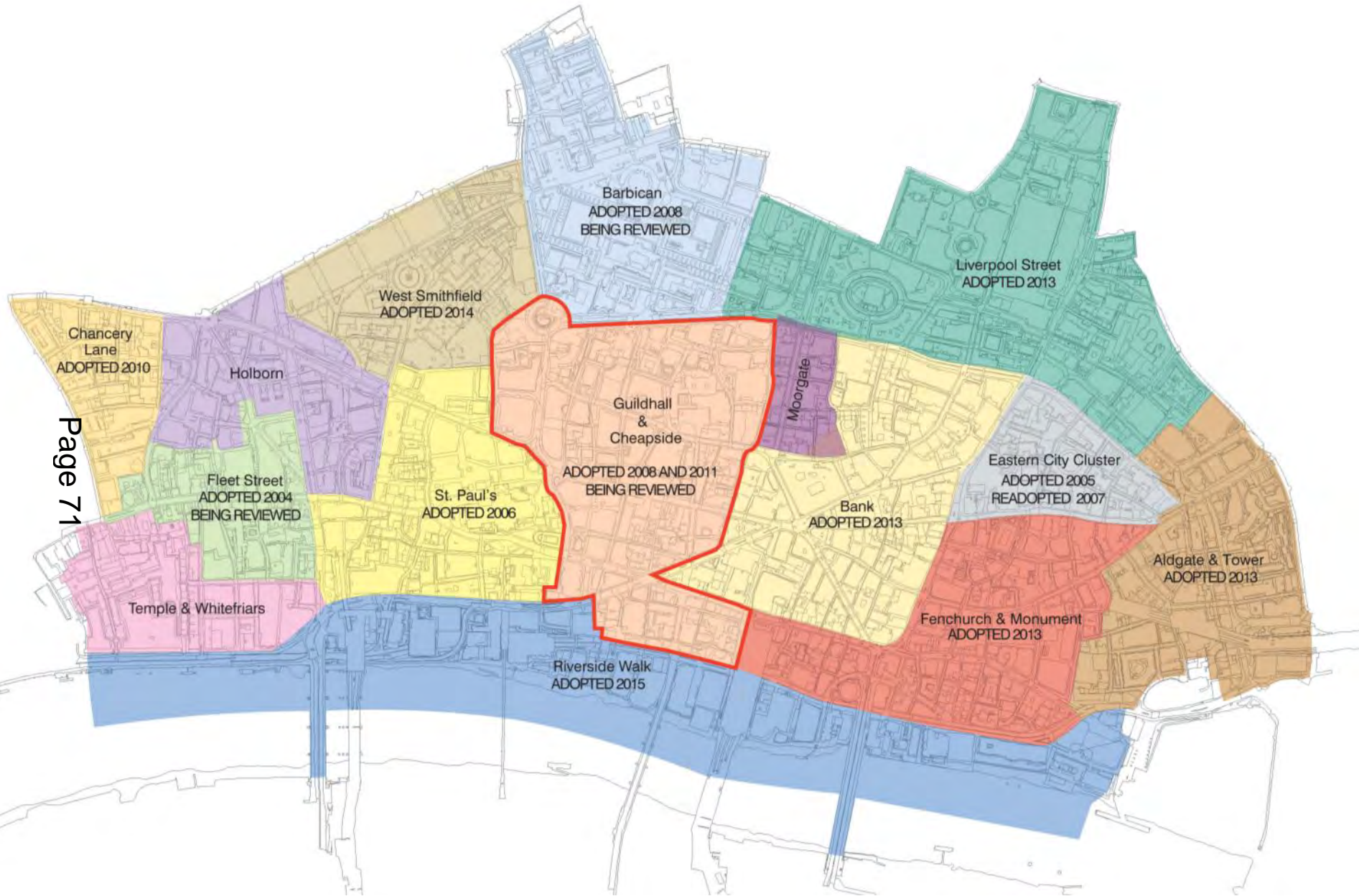


# STRATEGY OVERVIEW - Core Strategy





# STRATEGY REVIEW





# PUBLIC CONSULTATION

## Targeted correspondence:

- 2,800 leaflets (to all local occupiers and stakeholders)
- 1,670 emails with link to online survey (disseminated through City networks)
- 2,365 visits on consultation website

## Consultation responses:

- 226 online surveys
  - 201 on-site questionnaires
  - 46 exhibition feedback
  - 26 emails
  - 10 leaflets
  - 10 letters
- **514 responses**



# PUBLIC CONSULTATION – Analysis

## Main themes for improvements raised during the consultation:

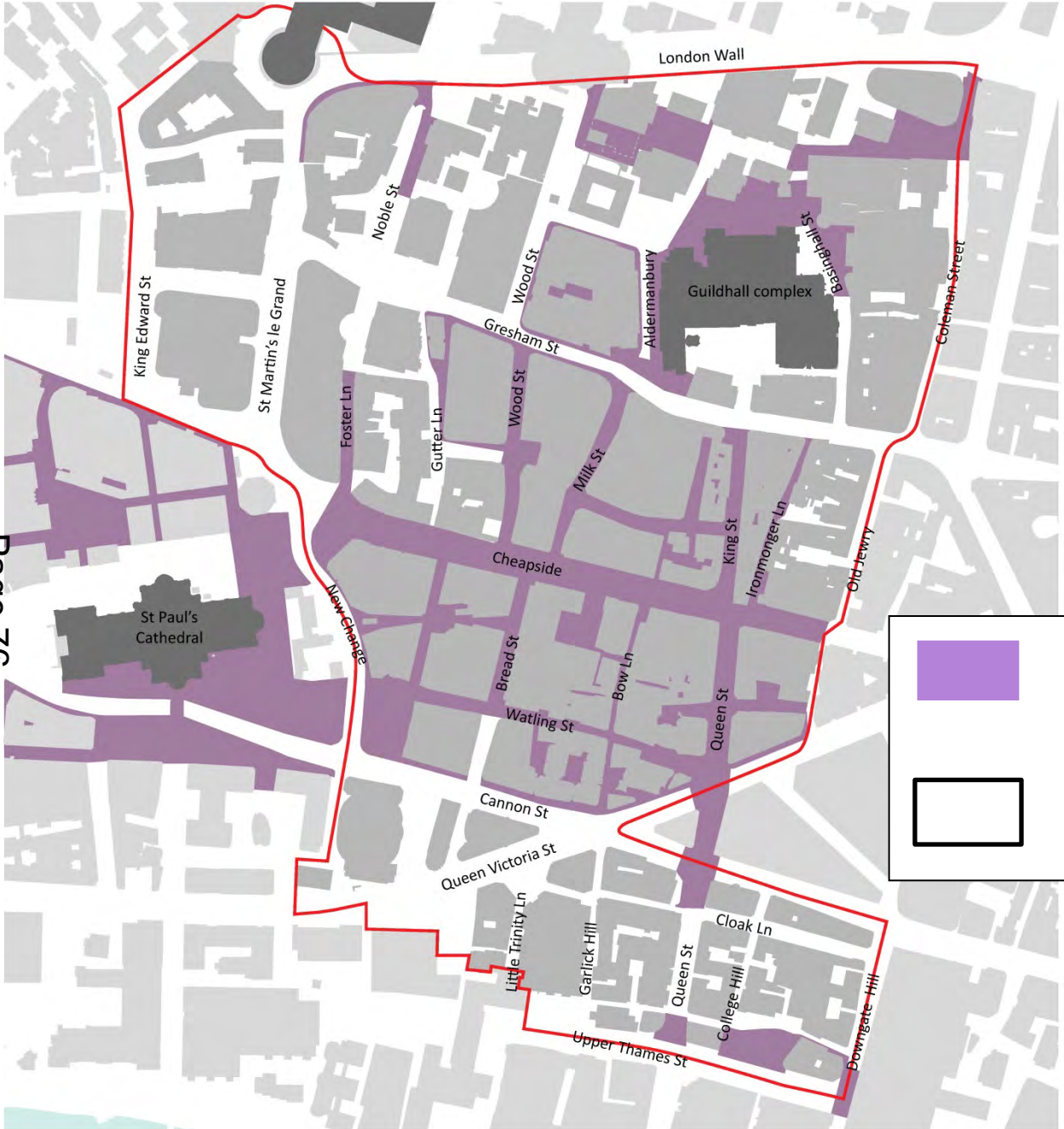
- Traffic reduction and calming
- Air quality
- More greenery – trees and planting
- Enhanced cycle safety and facilities
- More space for pedestrians and cyclists
- Improved links between transport, retail, employment, leisure and visitor attractions clusters
- Better way-finding and enhanced information signage on heritage assets

# STRATEGY OBJECTIVES

- **To better connect people with transport nodes, retail centre and cultural attractions**
- **To improve accessibility and way-finding to create easy-to-navigate and pleasant walking routes**
- **To introduce more greenery and create more public space for pedestrians to enjoy, away from traffic and pollution**
- **To improve road safety, particularly for vulnerable road users.**

# COMPLETED PROJECTS AND FUTURE PUBLIC REALM OPPORTUNITIES

Page 76



	Enhanced Public Realm
	Future Public Realm Opportunities

**itsu**  
health & happiness



Page 77

The Equine

Vital

MANSON HOUSE STATION







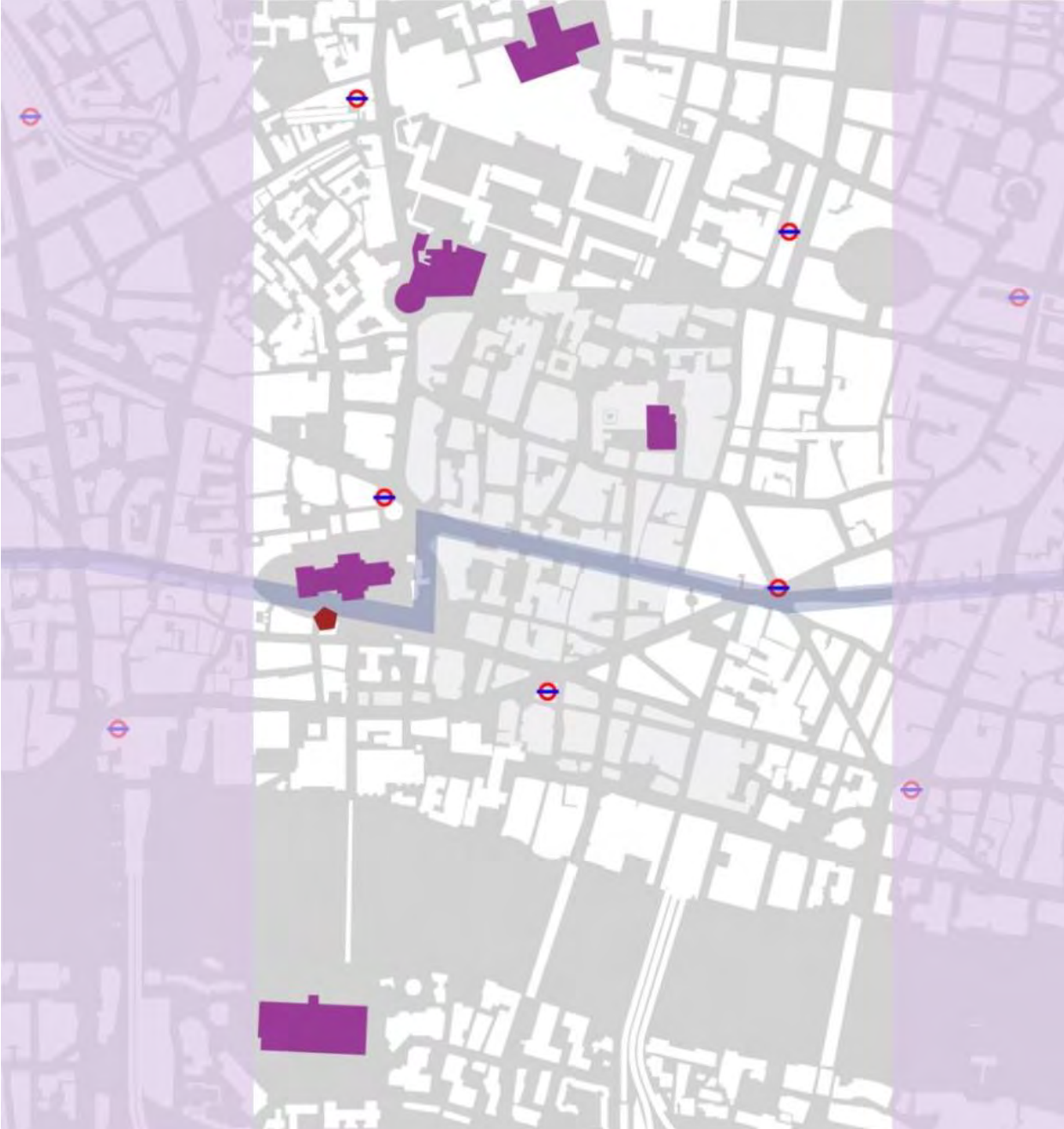








# CULTURAL CONNECTIONS













# FUTURE PUBLIC REALM - St Paul's/Museum of London Gyratory

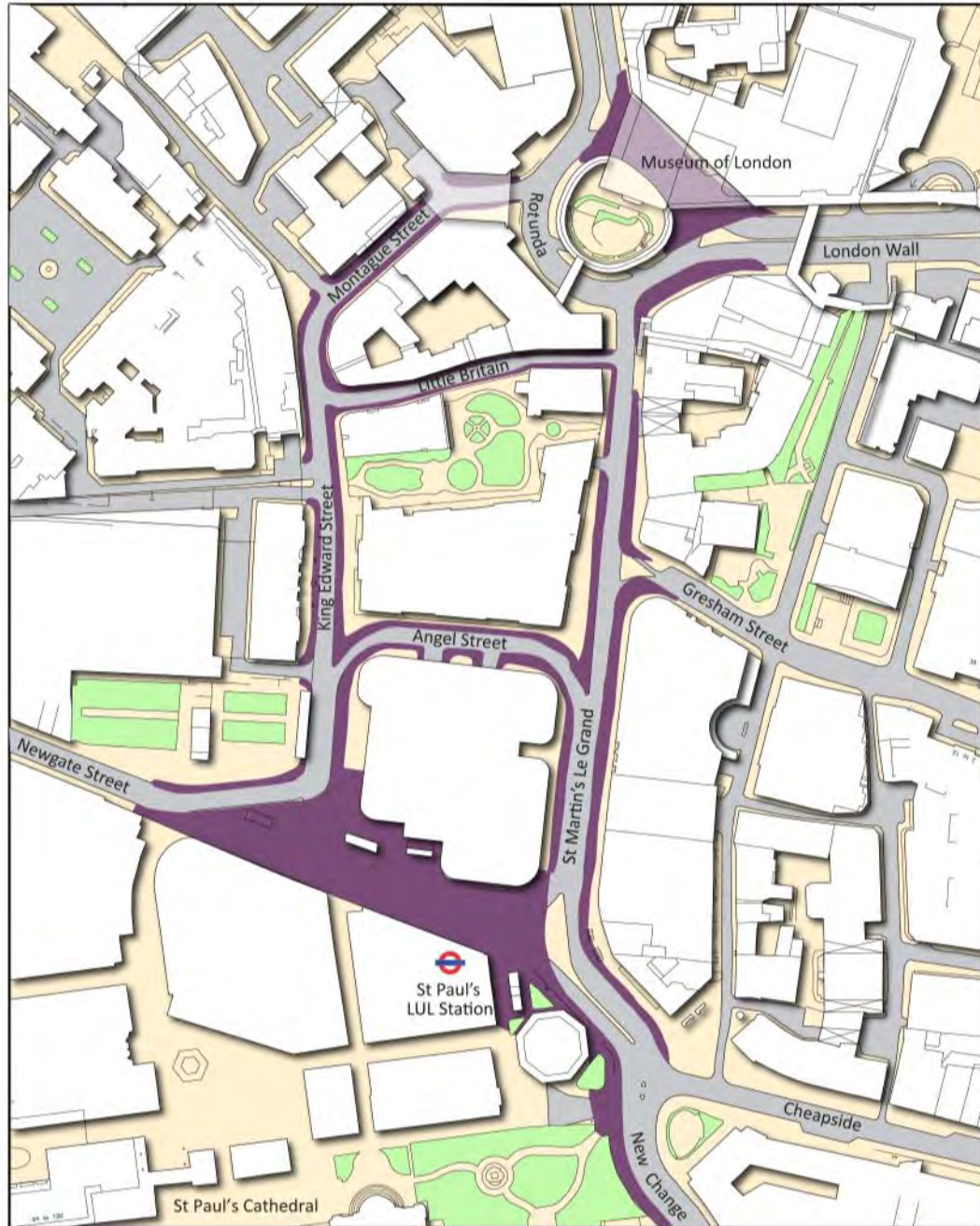




# New Public Space King Edward Street



# FUTURE PUBLIC REALM - St Paul's/Museum of London Gyratory





# New Public Space Newgate Street







# Planning & Transportation Next Committee

2<sup>nd</sup> June 2015

This page is intentionally left blank